



රාජකීය විද්‍යාලය - කොළඹ 07  
Ropal College - Colombo 07

දෙවන වාර පරීක්ෂණය - 2019  
Second Term Test - 2019

8 ශ්‍රේණිය  
Grade 8

තොරතුරු තාක්ෂණය  
Information Technology

කාලය: පැය 1 1/2 ඊ  
Time: 1 1/2 hours

Index No:.....

Name:.....

Class:.....

PART I

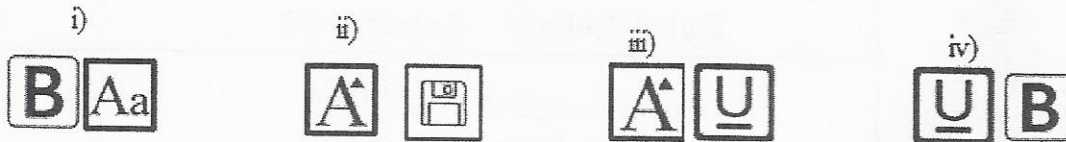
Answer all questions.

In each of the questions 1 to 20, pick one of the alternatives (1), (2), (3), (4) which you consider as correct or most suitable.

(2 x 20 = 40 Marks)

- What is the binary equivalent of decimal 15?  
i) 1010<sub>2</sub>      ii) 1101<sub>2</sub>      iii) 1111<sub>2</sub>      iv) 1000<sub>2</sub>
- A) 1010<sub>2</sub>      B) 102<sub>10</sub>      C) 1210<sub>2</sub>      D) 1111<sub>2</sub>  
What is/are the invalid number/numbers in the above list?  
i) A only      ii) A and D      iii) A and B      iv) C only
- What is the decimal equivalent of binary 1000<sub>2</sub>?  
i) 14      ii) 8      iii) 7      iv) 1
- A certain number system uses 0, 1, 2 and 3. What is the base of above number system?  
i) 10      ii) 4      iii) 3      iv) 2
- Which is **not** a file attribute?  
i) File type      ii) File name      iii) File extension      iv) File Section
- Which answer contains only computer ports?  
i) DVI/Serial      ii) DVI/ADSL  
iii) HDMI/CCTV      iv) RFID/USB
- VGA port is a computer port that is used to connect ..... to the computer.  
i) Keyboard      ii) Mouse      iii) Monitor      iv) Printer
- Mozilla Firefox is an example for  
i) Hardware      ii) Operating System  
iii) Application Software      iv) System Software

9. Which of the following tools are used to make a selected text underline and bold.?



10. Which is an example for control structure?

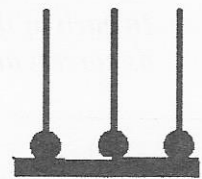
- i) Selection ii) Storing iii) Processing iv) Input

11. Hard disk and floppy disk are example for

- i) Input devices ii) Output devices  
iii) Storage devices iv) Communication devices

12. What is the decimal value represented by the above counting frame?

- i) 115 ii) 111 iii) 6 iv) 7



13. The Base of octal number system is,

- i) 2 ii) 7 iii) 8 iv) 16

14. Which tool represents UNDO in word processing software?

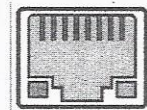


15. Google Chrome and Opera are examples for

- i) Web Server ii) Operating System  
iii) Web Browser iv) Antivirus Programs

16. The following picture represents.

- i) USB port ii) PS/2 port  
iii) HDMI port iv) RJ45 port



17. How many 'Caps Lock keys' are contained in the standard computer keyboard?

- i) 1 ii) 2 iii) 3 iv) 4

18. A computer fails to connect to the network when it has,

- i) A software problem ii) A hardware problem  
iii) A computer virus iv) All of the above

19. Which of the following is **not** a malware?

- i) Trojan Horse ii) Computer Virus iii) Scratch iv) Computer Worms

20. Which is an example for software?

- i) Compact Disk ii) Hard Disk iii) Motherboard iv) MS Word

## PART II

*Answer all questions.*

- (1) The computer understands data and instructions such as texts, numbers, images and sound that are fed to the computer by human as numbers.
- (i) Convert the following binary numbers, into decimal numbers. **Show steps of your calculation.**  
(2X5 =10marks)

(i) $111_2$	(ii) $100_2$	(iii) $1110_2$
(iv) $1000_2$	(v) $1010_2$	

- (ii) Convert the following decimal numbers into binary. **Show steps of your calculation.**  
(2X5 =10marks)

(i) 11	(ii) 25	(iii) 127
(iv) 32	(v) 64	



(2) Identify the most suitable port from the list given below.

(List: Parallel, VGA, Micro USB, HDMI, PS/2, RJ45)

Task	Port
Connect keyboard and mouse	
Connect LED display to the system unit	
Connect a television set to the system unit	
Connect printer	
Connect smart phone	

Write short answers for the following. Use only the given space.

(i) Write two examples for input devices.

.....

(ii) Write two examples for magnetic storage device

.....

(iii) Write an element of the CPU?

.....

(10 Marks)

(3) Select the most suitable word/words from the given list to fill the blanks in the statements given below.

(Justify, ports, Type, binary, decimal, numbers, file extension, save, MS Excel, Word processing, size of file, file attribute)

(i). A number system which uses two symbols is a ..... number system.

(ii). Number system is a method that can be used to represent .....

(iii). 0,1,2,3,4,5,6,7,8 and 9 numbers represents ..... number system.

(iv). Last modified date is an example for .....

(v) ".exe" is a .....

(vi).....are used to connect peripheral devices to the computer.

(vii). Creating document, invitation etc. are known as .....

(viii) Storing a file in a computer is called .....

(ix) ..... is a Spreadsheet software.

(x) .Alignment of text on both sides is called .....

(1X10 =10marks)

(4) (a) Write answers for the following questions .

(i) Write a hardware problem

.....

(ii) Write an example for Application software.

.....

(iii) Give one problem related to operating system.

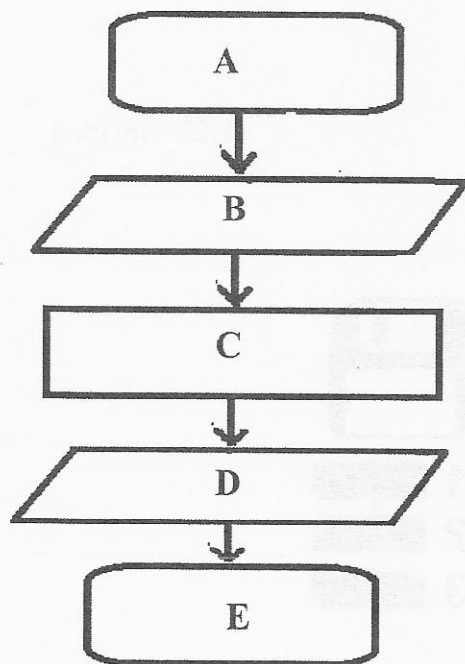
.....

(iv) What are the symbols used in Hexadecimal number system?

.....

(5 Marks)

(b) The following flowchart is used to find the area of a rectangle. Select missing terms from the given list.



A.....

B .....

C .....

D.....

E.....

(Start, End, Display Area, Input the length and width, Area = length x width )

(5 marks)

(5). (i) Identify the following formats and write down the correct tool in front of the letters.

Second term test - 2019 → A .....  
 Royal College → B .....  
 Stack of books → C .....  
 Grade 08 → D .....  
 Grade 08 → E .....

(1X5 =5marks)

(ii) Name the following tools used in MS word.

a. .....  
 b. .....  
 c. .....  
 d. .....  
 e. .....

(1X5 =5marks)

\*\*\*\*\*