



Royal College - Colombo 07

රාජකීය විද්‍යාලය - කොළඹ 07

Grade 8 – Third Term Test – November 2019

තෙවන වාර පරීක්ෂණය - 2019 නොවැ. - 8 ශ්‍රේණිය

කාලය : පැය 2
Time : 2 hours

Geography – I භූගෝල විද්‍යාව – I

61	E	I
----	---	---

Name :- Grade :- Index number:-.....

Answer all questions.

❖ Select and underline correct answer for question number 1 - 5.

- (1) The planets that are closest and furthest to the sun respectively are.

(i) Mercury and Neptune	(ii) Mercury and Venus
(iii) Mercury and Ceres	(iv) Mercury and Jupiter
- (2) Not a dwarf planet.

(i) Eris	(ii) Uranus	(iii) Make make	(iv) Haumea
----------	-------------	-----------------	-------------
- (3) The correct answer for the revolution of the earth is

(i) 23 hours 56 minutes	(ii) 23 hours 54 minutes
(iii) 365 days 6 hours	(iv) 365 days 4 hours
- (4) A scholar who was not involved in the disclosure of space information.

(i) Claudius Ptolemy	(ii) Galileo Galilei
(iii) Nicholas Copernicus	(iv) Vasco da Gama
- (5) The distance between two locations on a 1 : 50,000 metric map is 58cm and the actual distance between them.

(i) 116 km	(ii) 29 km	(iii) 92 km	(iv) 27 km
------------	------------	-------------	------------

❖ If the following statements are correct mark (✓) if it is wrong mark (X) in the bracket.

- (6) It is believed that the solar system has been formed 4600 million yrs ago,
by combining dust particles and gases together. ()
- (7) Saturn is in seventh position from the sun. ()
- (8) Celestial bodies with a source of light and heat are called stars. ()

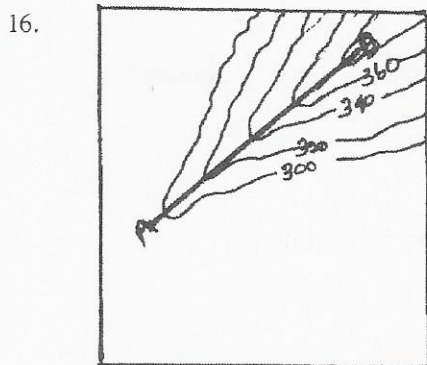
- (9) The average temperature on earth is 18°C . ()
- (10) The time it takes for the earth to rotate around its axis is 24 hours. ()

❖ Select the correct answer and fill in the blanks for question numbers 11-15.

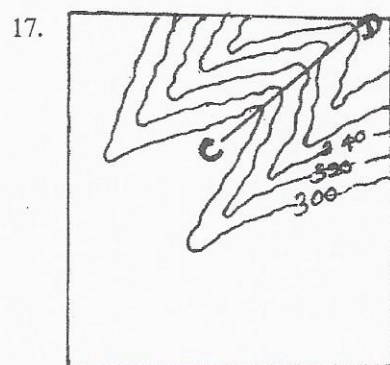
(desert, Bangladesh, Tea, coconut, mountainous, coastal, Pakistan)

- (11) is one of the most common economic crops along the coastal land scale.
- (12) Indus river valley is located in
- (13) The landscape receives less than 250mm of rain.
- (14) Tea cultivation is common in land scape.
- (15) Mangroves, wetland and marshy lands can be seen in land scape.

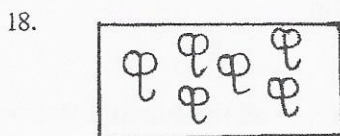
❖ Use the following conventional signs and topographic features to answer questions 16- 20.



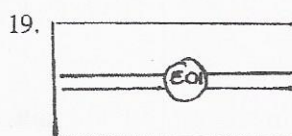
AB -



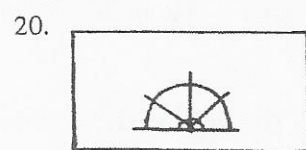
CD -



.....



.....



.....

(2 x 20 = 40 marks)



Royal College - Colombo 07

රාජකීය විද්‍යාලය - කොළඹ 07

Grade 8 – Third Term Test – November 2019

තෙවන වාර පරීක්ෂණය - 2019 නොවැ. - 8 ශ්‍රේණිය

Geography – II

භූගෝල විද්‍යාව – II

61

E

II

Name :- Grade :-

Index number:-.....

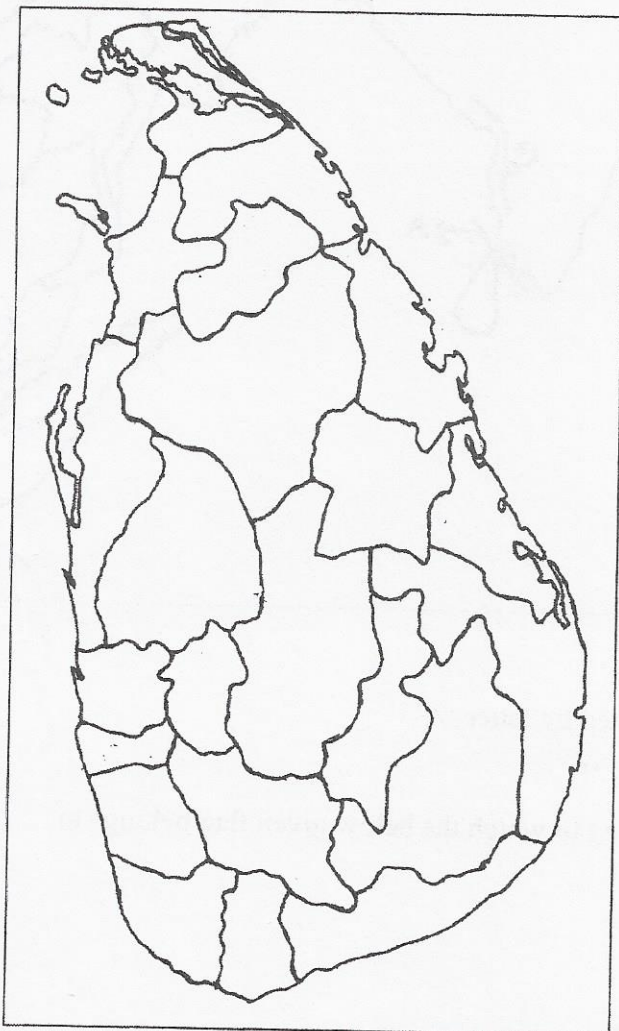
Question 1 and 2 are compulsory.

❖ *Select 3 more questions.*

❖ *Total number of questions to be answered is five.*

Answer the questions using the following Sri Lankan map.

(1) a).

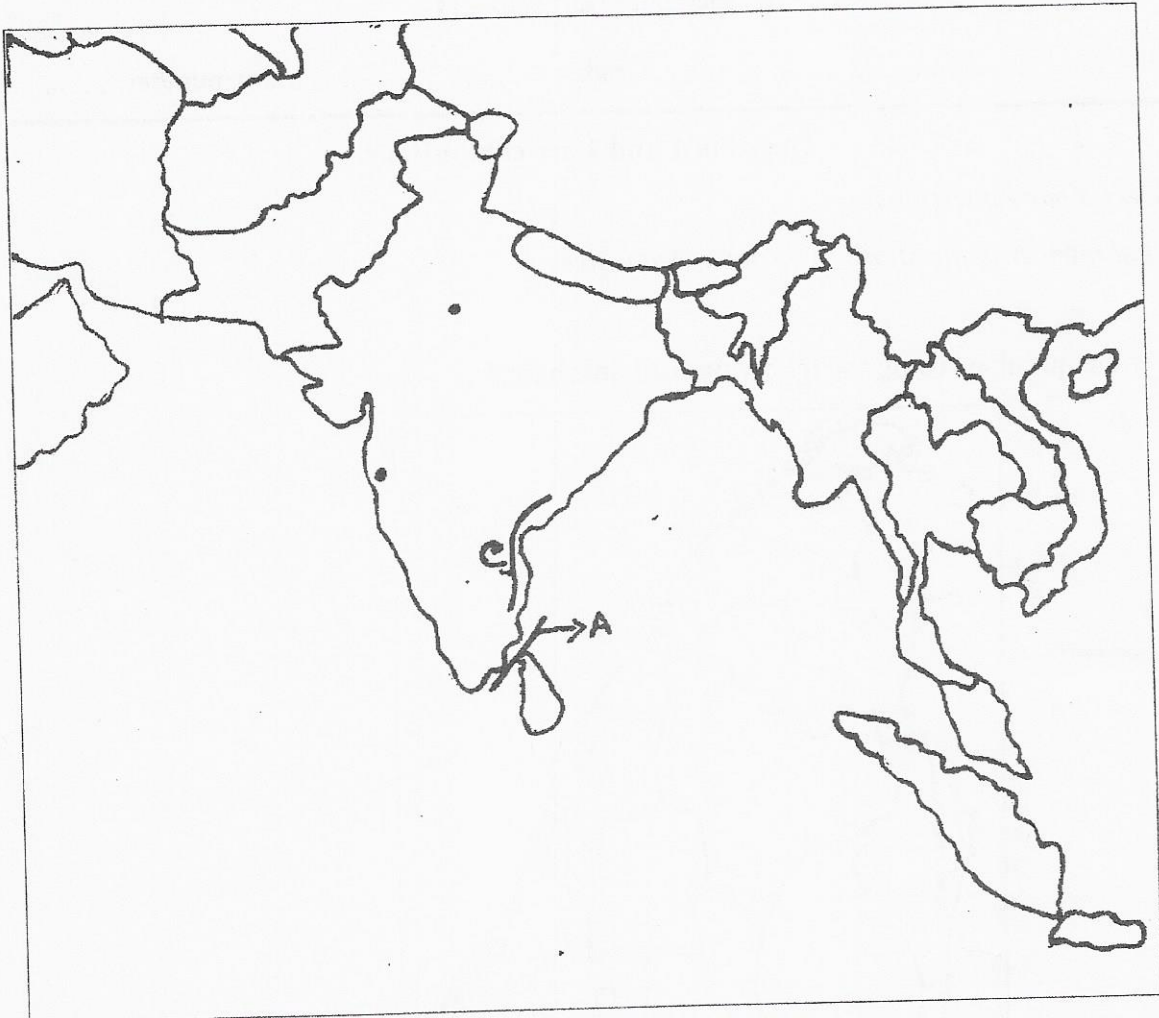


- i) Colour Kandy district with different geographical features in yellow.
- ii) Colour the district in blue to which Dondra Head belongs to.
- iii) Colour the districts in western province in red.

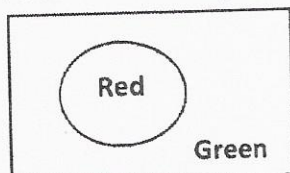
- iv) Colour the district from where the Mahaweli river falls to the sea in Green
- v) From which district the Kalu river falls into the sea?.....
- vi) Label Kurunegala district as 'B'

(6 marks)

b) Answer the questions using the following South Asian map.



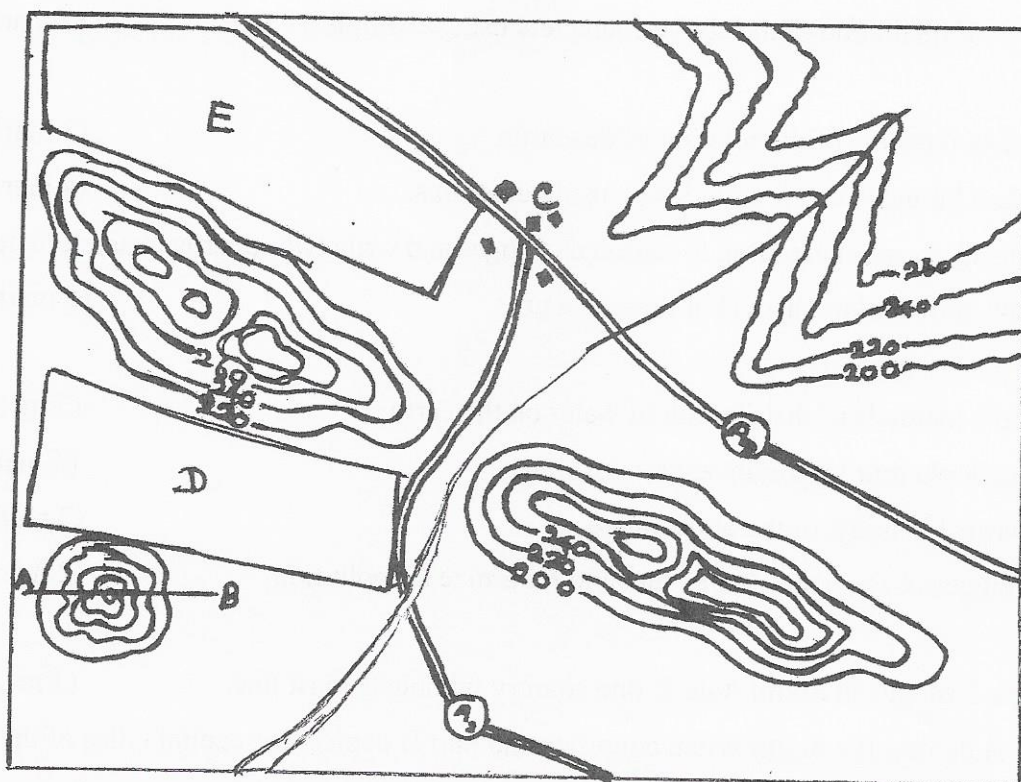
- i) What is the strait depicted by letter 'A'
- ii) Name Bay of Bengal as 'B'
- iii) Colour the country in red to which the below given flag belongs to.



- iv) What is the mountain depicted by 'C'
- v) Colour the country 'Pakistan' in green.
- vi) Mark the city of Mumbai which is a highly populated city.

(6 marks)

- (2) Answer the following questions by using the following topographic map. (use relevant conventional signs and colours)



- i) What is the topographic feature depicted by the letters 'A' and 'B'. (1 mark)
- ii) Draw bridges in relevant places. (2 marks)
- iii) Draw a tea cultivation in the south-east direction of the map. (2 marks)
- iv) Draw a school and a hospital in the junction depicted by letter "C". (2 marks)
- v) There is a home garden in the place marked as 'D'. (1 mark)
- vi) Letter E shows a coconut cultivation. (1 mark)
- vii) Colour the places which are higher than 280m by using brown colour. (1 mark)
- viii) Colour the roads in the above map using relevant conventional colours. (1 mark)
- ix) Colour the river in the above map by using relevant conventional colour. (1 mark)

- (3) i) Mention 3 celestial objects in the Solar System.
ii) Complete the following grid. (3 marks)

Interior planets	Outer planets
1).	3).
2).	4).

(4 marks)

(iii) a). "Earth is the most significant planet in the solar system" state 3 characteristics of the earth. (3 marks)

b). Explain one of the above characters using examples. (2 marks)

(4) i). Write two results of the rotation of the earth. (3 marks)

ii). Explain latitudes and longitudes by using diagrams. (4 marks)

iii). Name all seasons according to seasonal changes and write two specific characteristics of each season and tabulate them (Put them in a grid (5 marks)

(5) i). Write 3 methods of distribution of water on the earth. (3 marks)

ii). Write down four important aspects of water. (4 marks)

iii). a). write 3 benefits of the atmosphere. (3 marks)

b). Suggest 4 steps that can be taken to minimize air pollution. (2 marks)

(6) i). Name 2 islands in South Asia & one country without a coast line. (3 marks)

ii). Part A depicts the South Asian countries and part B depicts the capital cities of them. Match A & B and write the English letter in the bracket provided.

<u>A</u>		<u>B</u>	
1. Maldives	(.....)	(a) Thimpu	
2. Bangladesh	(.....)	(b) Dhaka	
3. Nepal	(.....)	(c) Male	
4. Pakistan	(.....)	(d) Islamabad	
		(e) Kathmandu	(4 marks)

iii). Explain the effects on water & soil that occur due to industrial & urban landscape with 2 examples for each. (5 marks)