



Royal College - Colombo 07

Year End Evaluation - 2019

Grade 8

Information Technology Time: 1 1/2 hours

Index No:.....

Name:.....

Class:.....

PART I

Answer all questions.

In each of the questions 1 to 20, pick one of the alternatives (1), (2), (3), (4) which you consider as correct or most suitable. (2 x 20 = Marks)

1. What is the decimal equivalent of binary number 10001_2

- i) 18 ii) 17 iii) 15 iv) 19

2. What is the largest number from the following?

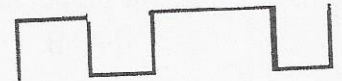
- i) 11101_2 ii) 1100_2 iii) 1000_2 iv) 1001_2

3. The base of the octal number system is,

- i) 5 ii) 2 iii) 10 iv) 8

4. The symbol given here is.?

- i) Analog Signal ii) Voice Signal iii) Digital Signal iv) Radio Signal



5. Consider the following statements A, B and C.

A : Base of binary number system is 2

B : 111_2 is equivalent to 7_{10}

C : 6_{10} is equivalent to 110_2

Which of the above statements are true?

- i) A and B ii) B and C iii) A and C iv) All A, B and C

6. All activities in the computer are carried out using digits.....and.....

- i) 1 and 0 ii) 10 and 0 iii) 0 and 0 iv) 1 and 2

7. In the table given below, the highlighted part is called

- i) Row ii) Column iii) Cell iv) Chart

8. RJ45 cable is connected to

- i) USB port ii) Ethernet port iii) PS/2 port iv) HDMI port

9. Trojan horse is a

- i) Firmware ii) Hardware iii) Malware iv) Live ware

10. Which of the following statement is **correct** regarding application software problems?

- i) not responding to the user commands ii) incorrect functioning
iii) taking long time to load iv) All of the above are correct

11. The tool that can be used to open an existing file is



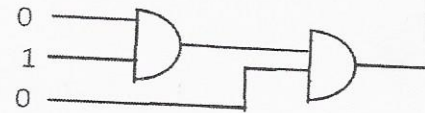
12. What is the output of the following logic circuit?

i) 1

ii) 0

iii) 2

iv) 1 and 0



13. The given symbols represent gates respectively.

i) NOT and AND

ii) NOT and OR

iii) OR and NOT

iv) AND and NOT



14. The output of AND gate is denoted by

i) $A+B$

ii) $A.B$

iii) A,B

iv) $A-B$

15. The tool that cannot be used to develop a web page is

i) HTML

ii) CSS

iii) PHP

iv) HTTP

16. HTML stands for

i) Hyper Tool Transfer Protocol

ii) Hyper Text Markup Language

iii) Hyperlink Transfer Protocol

iv) Hyper Text tracing Protocol

17. The two main parts of a web page are

i) head and body

ii) head and page

iii) body and title

iv) head and text

18. What is the tag used in HTML to insert a paragraph to the web page?

i) `<body>`

ii) ``

iii) ``

iv) `<p>`

19. The tag used to insert a picture to the web page is,

i) `<a>`

ii) `
`

iii) ``

iv) `<body>`

20. Internet facilities should be taken from a/an,

i) Internet Browser

ii) Web Browser

iii) Internet Service Provider

iv) Search Engine



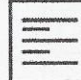


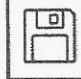
PART II

Answer all questions.

1). Creating documents using word processing software is known as word processing. Word has dozens of tools to make the editing process as easy as possible. Understanding and taking advantage of Word's tools is a major time saver in preparing your documents.

Study the following word processing tools and write the function of each in the space provided by selecting from the list given.

(Darken the text, Underline, Align left text , Save, Copy)

Word processing tool	Main function
	Change case
	
	
	
	
	

(1x 5=5 marks)

ii). Write two Word processing software.

.....

(1x 2=2 marks)

iii). Write two types of documents that can be produced, using word processing software?

.....

(1x 2=2 marks)

iv). Pictures, Tables and Shapes are some features of word processing software. Name another feature available

(1x 1=1 marks)

2). Logic gates are the basic building blocks of any digital system. It is an electronic circuit having one or more than one input and only one output.

i). Draw the correct logic symbol for the given logic gates.

Logic gate	Symbol
AND gate	
OR Gate	
NOT gate	

(1x 3=3 marks)

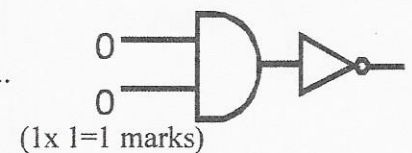
ii). Draw the truth table of AND gate.

A	B	A.B

(0.5x 12=6 marks)

iii). If the inputs of the above logic circuit are 0, what is the output?

.....



3).

i). Convert the following Binary numbers into Decimal. (1x 4=4 marks)

111111_2	10001_2
1_2	101_2

ii) Convert the following Decimal numbers into Binary. Show your computations. (1x 6=6 marks)

45 ₁₀	25 ₁₀
1 ₁₀	14 ₁₀
29 ₁₀	4 ₁₀

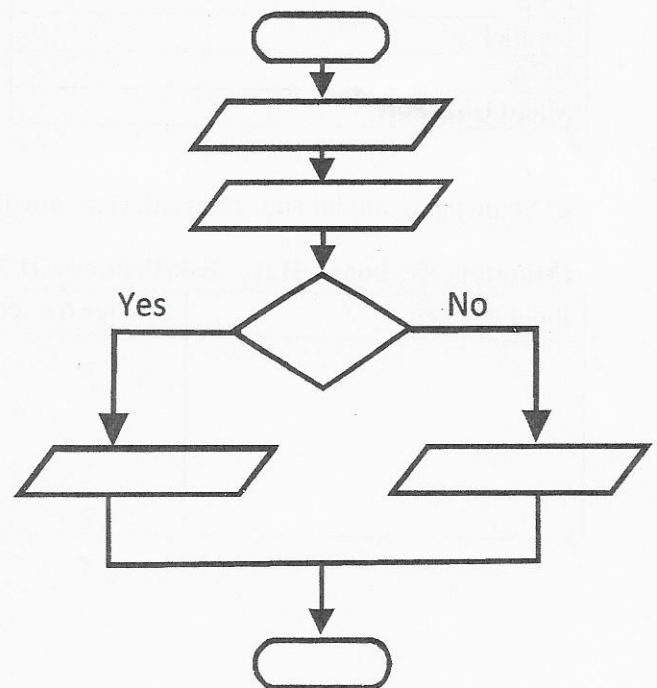
4).A Flow chart is a graphical representation of solving a problem.

i).Draw the flow chart symbols corresponding to the functions given below.(1x 5=5 marks)

Input	Process	Output	Start	Decision

ii).The following flowchart determines the greater number out of two given unequal numbers. Complete the flowchart by selecting the correct answer from the given list.

(List:- End,Input first number(x), Input second number(y),Start,If $x > y$,output y,output x)



5).i) Examine the document given below carefully. List out the formatting tools used to create that.

1.....

2.....

3.....

4.....

5.....

(1x 5=5 marks)

ii) Write 2 alignment types used in the above file.

..... (1x2=2marks)

The above document was saved on 01st Nov. 2019 in C:\ Termtest\grade8 under the file name "ict8.doc" and its capacity was 342KB.

iii) Write 3 attributes of the above file.

..... (1x3=3marks)

6) A **computer port** is a connection point or interface between a **computer** and an external or internal device.

i) Select the devices that are connected through the given ports. Use the list below.

List:-(**printer/ network / key board/ digital television / mobile phones / monitor**)

Port	Task
HDMI	
PS/2	
Parallel	
VGA	
Micro USB Port	

(1x 5=5 marks)

ii) Some input, output and storage devices are given below. Categorize them accordingly.

(**Monitor /Keyboard/Hard disk/Printer/CD/Mouse/Flash drive/DVD/Camera/Speaker**)

Input devices	Storage devices	Output devices

(0.5x 10=5 marks)