

ශ්‍රී ලංකා විභාග දෙපාර්තමේන්තුව ශ්‍රී ලංකා විභාග දෙපාර්තමේන්තුව ශ්‍රී ලංකා විභාග දෙපාර්තමේන්තුව ශ්‍රී ලංකා විභාග දෙපාර්තමේන්තුව ශ්‍රී ලංකා විභාග දෙපාර්තමේන්තුව
இலங்கைப் பரீட்சைத் திணைக்களம் இலங்கைப் பரීட்சைத் திணைக்களம் இலங்கைப் பரීட்சைத் திணைக்களம் இலங்கைப் பரීட்சைத் திணைக்களம் இலங்கைப் பரීட்சைத் திணைக்களம்
Department of Examinations, Sri Lanka Department of Examinations, Sri Lanka Department of Examinations, Sri Lanka Department of Examinations, Sri Lanka Department of Examinations, Sri Lanka
ශ්‍රී ලංකා විභාග දෙපාර්තමේන්තුව ශ්‍රී ලංකා විභාග දෙපාර්තමේන්තුව ශ්‍රී ලංකා විභාග දෙපාර්තමේන්තුව ශ්‍රී ලංකා විභාග දෙපාර්තමේන්තුව ශ්‍රී ලංකා විභාග දෙපාර්තමේන්තුව
இலங்கைப் பரීட்சைத் திணைக்களம் இலங்கைப் பரීட்சைத் திணைக்களம் இலங்கைப் பரīட்சைத் திணைக்களம் இலங்கைப் பரīட்சைத் திணைக்களம் இலங்கைப் பரīட்சைத் திணைக்களம்
Department of Examinations, Sri Lanka Department of Examinations, Sri Lanka Department of Examinations, Sri Lanka Department of Examinations, Sri Lanka Department of Examinations, Sri Lanka

84 E I, II

අධ්‍යයන පොදු සහතික පත්‍ර (සාමාන්‍ය පෙළ) විභාගය, 2024(2025)
கல்விப் பொதுத் தராதரப் பத்திர (சாதாரண தர)ப் பரீட்சை, 2024(2025)
General Certificate of Education (Ord. Level) Examination, 2024(2025)

ශිල්ප කලා I, II
நுண்கலை I, II
Arts and Crafts I, II

පැය තුනයි
மூன்று மணித்தியாலம்
Three hours

අමතර කියවීමේ කාලය මිනිත්තු 10 යි
மேலதிக வாசிப்பு நேரம் - 10 நிமிடங்கள்
Additional Reading Time - 10 minutes

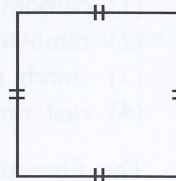
Use additional reading time to go through the question paper,
select the questions you will answer and decide which of them
you will prioritise.

Arts and Crafts I

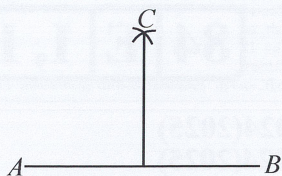
Instructions :

- * Answer all questions.
- * In each of the questions from 1 to 40, pick one of the alternatives (1), (2), (3), (4), which is correct or most appropriate.
- * Mark a cross (X) on the number corresponding to your choice in the answer sheet provided.
- * Further instructions are given on the back of the answer sheet. Follow them carefully.

- The folk arts used for the production of humour and rituals by the Sri Lankans are
(1) mask art and bobbin lace art. (2) lacquer art and puppetry.
(3) mask art and puppetry. (4) puppetry and bobbin lace art.
- The option that consists of measurements of a plane geometrical image drawn is
(1) length and width. (2) length and height.
(3) width and height. (4) length, width and height.
- Which institute has approved the types of lines used in technical drawing?
(1) Sri Lanka Standards Institution
(2) International Organization for Standardization
(3) Engineering Council Sri Lanka
(4) South Asian Regional Standards Organization
- The standard paper type and number that can be obtained by folding a standard A3 paper symmetrically twice and cutting along the fold edges are
(1) 4 A₄ papers. (2) 2 A₅ papers.
(3) 4 A₅ papers. (4) 4 A₆ papers.
- Select the correct option that includes the special features of the geometrical shape given in the illustration.
(1) The value of an angle is 90° and the diagonals do not bisect in a right angle.
(2) The opposite sides are equal and vertices do not bisect.
(3) Diagonals are unequal and sides are parallel.
(4) The value of an angle is 90° and diagonals are equal.
- Before creating a physical object, what is required to draw the plan of that object?
(1) morphological appearance (2) direct projection appearance
(3) evolutionary appearance (4) front appearance



7.

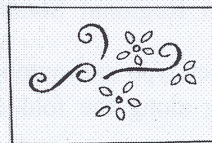


The option that consists of the values of the angles that can be created using the compass inside the section BC of this image is

- (1) 15° , 22° , 30° , 70°
- (2) 15° , 30° , 45° , 60°
- (3) 22° , 30° , 40° , 75°
- (4) 45° , 65° , 75° , 85°

✕

8. Select the option that consists of the characteristics that can be seen in an acute angled unequal lined triangle.
 - (1) One angle is 90° and all the three sides are unequal
 - (2) All the three sides are unequal and the values of the three angles are also unequal
 - (3) One angle is 60° and all sides are equal
 - (4) One angle is less than 90° and two sides are equal
9. The length of the rectangle drawn for the evolutionary image of a cylinder of which the radius of the base is 2 cm is,
 - (1) 4 cm.
 - (2) 6 cm.
 - (3) 8 cm.
 - (4) 12 cm.
10. What are the data that should be essentially provided in creating an ellipse?
 - (1) The distance between the foci and the directrix
 - (2) The length of the major axis and minor axis
 - (3) The radii of the small circle and the large circle
 - (4) The distance between the major axis and the directrix
11. Select the option that includes the group of colours that should be used to create a monochrome colour.
 - (1) a basic colour, white colour and black colour
 - (2) a basic colour, a secondary colour and white colour
 - (3) a basic colour, a tertiary colour and black colour
 - (4) a basic colour, a secondary colour and a tertiary colour
12. What is the group of brushes that should be used to colour the image in the below given illustration?
 - (1) number 0 - 4 brushes
 - (2) number 2 - 6 brushes
 - (3) number 4 - 7 brushes
 - (4) number 6 - 8 brushes

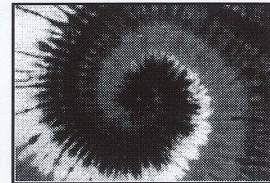


13. When colouring textile it is necessary to do pre-treatment. In colouring silk clothing materials, it is necessary to do
 - (1) carbonizing and bleaching.
 - (2) removal of gum and bleaching.
 - (3) starch removing and rust removing.
 - (4) rust removing and bleaching.
14. The fibre that burns slowly with a smell of paper burn during a burning test is a
 - (1) silk fibre.
 - (2) cotton fibre.
 - (3) linen fibre.
 - (4) artificial silk fibre.

15. The correct order of the treatment done to increase the quality of the cloth after weaving is,
 (1) rust removing, starch removing and bleaching.
 (2) starch removing, rust removing and bleaching.
 (3) rust removing, bleaching and starch removing.
 (4) bleaching, starch removing and rust removing.

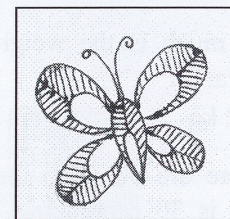
16. The technical method that is used to decorate the below given creation is

- (1) tie and dye method.
 (2) batik method.
 (3) printing method.
 (4) stencil method.



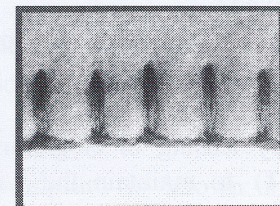
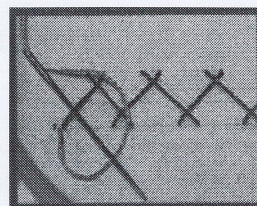
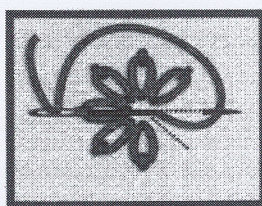
17. The environmental material that can be used as a natural block to print the design given in the image is

- (1) a lotus root.
 (2) a petiole of a plantain leaf.
 (3) an okra pod.
 (4) a potato.



18. The tool used to spread the dye applied on the screen fixed to the frame in screen printing is the
 (1) brush. (2) dye sprayer. (3) dye plate. (4) scuge.

19. Select the option that depicts the stitching methods shown in the below images in order.



- (1) chain stitch, lazy daisy stitch, herringbone stitch, blanket stitch
 (2) satin stitch, bullion stitch, French knot stitch, lazy daisy stitch
 (3) cross stitch, chain stitch, satin stitch, stem stitch
 (4) lazy daisy stitch, chain stitch, cross stitch, herringbone stitch

20. Several steps that should be followed to make a creation in paper quilling art are given below.

- A - decorating the rolled strips
 B - cutting paper strips
 C - prepare loosely as needed
 D - rolling the paper strips
 E - pasting on a flat surface

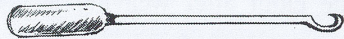
The option that includes the correct order of these steps are

- (1) A, B, C, D, E. (2) B, C, D, A, E.
 (3) B, D, A, C, E. (4) C, B, A, D, E.

21. What is the hand loom with treadles in which the shuttle with weft is given by hand in weaving and for which decorative designs with less width can be applied?

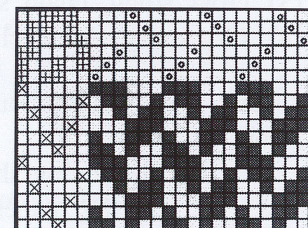
- (1) table loom (2) power loom
 (3) fly shuttle loom (4) utility loom

22.



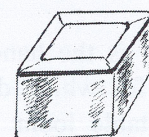
The tool shown in the above image is used to

- (1) draw weft through shed. (2) put patterns through shed.
 - (3) draw threads through heels. (4) make threads with fibre.
23. In rolling threads on a bobbin to elongate thread for the warp, the skeins of thread are kept
- (1) on the winding wheel. (2) on the swift.
 - (3) on the loom frame. (4) on the swift stand.
24. In numbering threads, if the weight of 1000 meters of spun thread is 40 grams, its tex number is
- (1) 4. (2) 12. (3) 20. (4) 40.
25. How many skeins of thread are contained in 2 kilograms of thread of metric number 48^s ?
- (1) 24 (2) 48 (3) 72 (4) 96
26. How much is the weight of a bale of thread with 60 skeins of thread of metric number $\frac{2}{40^s}$ in kilograms?
- (1) 2 kg (2) 3 kg (3) 15 kg (4) 20 kg
27. If there are 50 warp threads in a centimetre of a serviette warp of which the length is 100 m and width is 30 centimetres, the number of warp threads that should be used to elognate that warp is
- (1) $30 \times 50 = 1500$ (2) $50 \times 100 = 5000$
 - (3) $100 \times 30 = 3000$ (4) $100 \times 30 \times 50 = 150\ 000$
28. In which part of the loom the pairs of levers used to operate the healols of a weaving loom are fixed?
- (1) in the heald frames (2) on batten
 - (3) on rails (4) on back lease rod
29. By leasing in elognating a warp, it is expected
- (1) to maintain the width of the cloth properly.
 - (2) to roll the weaved cloth on the cloth beam.
 - (3) for the ease of separating when drawing threads from the headlols or reeds.
 - (4) to fix thread units on warp roller in elognating.
30. What is the twill weaving type shown in the following image?
- (1) broken twill
 - (2) wave twill
 - (3) pointed twill
 - (4) figured twill

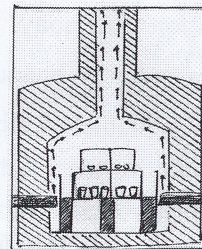


31. The clay type that contains only one chemical water particle in clay classification is
- (1) kaolinite. (2) mica clay.
 - (3) pipe clay. (4) montmorillonite.

32. The method used to create the clay item shown in the given image is
- (1) using coiling method.
 - (2) using slab method.
 - (3) using potters wheel.
 - (4) creating with free hand.



33. The plasticity of clay is very important in making goods. This is affected by the percentage of
 (1) titanium in clay. (2) iron in clay.
 (3) silica in clay. (4) feldspar in clay.
34. The areas where interzonal clay deposits in Sri Lanka are located in, are
 (1) Kochchikade and Aluthnuwara. (2) Kelaniya and Bentota.
 (3) Anuradhapura and Oddusudan. (4) Bangadeniya and Galoya.
35. When decorating a clay item with pan clay mixture, what is added to it to preserve for a longer period of time?
 (1) binder glue (2) colourless varnish
 (3) camphor powder (4) colouring
36. Clay goods are exposed to high temperature by glazing,
 (1) in basic firing. (2) in bone dry firing.
 (3) in fire in bisque firing. (4) in secondary firing.
37. The kiln shown in the following image is known as the
 (1) top loading kiln.
 (2) updraft kiln.
 (3) side loading kiln.
 (4) continuous kiln.



* *

සියලු ම හිමිකම් ඇවිරිණි / முழுப் பதிப்புரிமையுடையது / All Rights Reserved]

ශ්‍රී ලංකා විභාග දෙපාර්තමේන්තුව ශ්‍රී ලංකා විභාග දෙපාර්තමේන්තුව ශ්‍රී ලංකා විභාග දෙපාර්තමේන්තුව ශ්‍රී ලංකා විභාග දෙපාර්තමේන්තුව ශ්‍රී ලංකා විභාග දෙපාර්තමේන්තුව
இலங்கைப் பரீட்சைத் திணைக்களம் இலங்கைப் பரීட்சைத் திணைக்களம் இலங்கைப் பரීட்சைத் திணைக்களம் இலங்கைப் பரීட்சைத் திணைக்களம் இலங்கைப் பரීட்சைத் திணைக்களம்
Department of Examinations, Sri Lanka Department of Examinations, Sri Lanka Department of Examinations, Sri Lanka Department of Examinations, Sri Lanka Department of Examinations, Sri Lanka
ශ්‍රී ලංකා විභාග දෙපාර්තමේන්තුව ශ්‍රී ලංකා විභාග දෙපාර්තමේන්තුව ශ්‍රී ලංකා විභාග දෙපාර්තමේන්තුව ශ්‍රී ලංකා විභාග දෙපාර්තමේන්තුව ශ්‍රී ලංකා විභාග දෙපාර්තමේන්තුව
இலங்கைப் பரීட்சைத் திணைக்களம் இலங்கைப் பரීட்சைத் திணைக்களம் இலங்கைப் பரීட்சைத் திணைக்களம் இலங்கைப் பரīட்சைத் திணைக்களம் இலங்கைப் பரīட்சைத் திணைக்களம்
Department of Examinations, Sri Lanka Department of Examinations, Sri Lanka Department of Examinations, Sri Lanka Department of Examinations, Sri Lanka Department of Examinations, Sri Lanka

84 E I, II

අධ්‍යයන පොදු සහතික පත්‍ර (සාමාන්‍ය පෙළ) විභාගය, 2024 (2025)
கல்விப் பொதுத் தராதரப் பத்திர (சாதாரண தர)ப் பரீட்சை, 2024 (2025)
General Certificate of Education (Ord. Level) Examination, 2024 (2025)

ශිල්ප කලා I, II
நுண்கலை I, II
Arts and Crafts I, II

Arts and Crafts II

* Answer five questions, including question one and four other questions.

- Steps have been taken by the school prefects to plan a ceremony for the Teacher's Day felicitation to be organized by the students of the school to celebrate the International Teachers' Day.
 - Draw a model of a suitable poster to make the school community aware of the Teachers' felicitation ceremony.
 - Draw a suitable bouquet to welcome the teachers.
 - Draw a suitable creative badge to be fixed on the saree or the shirt when welcoming the teachers.
 - Mention **two** materials that can be used for a lamp that is created with natural materials to be lit during the function.
 - Mention **two** printing methods that can be used to print the phrase 'Teachers' Felicitation' in the backdrop of the stage.
 - Mention **two** methods that can be used to create a beautiful band to be worn on the hand to identify the members of the organizing committee.
 - Draw a pattern for a seat cover made with patchwork to decorate the chairs for the invited guests.
 - Mention **two** methods that can be used to create a similar clay item to be given as a gift for the teachers.
 - Mention the method of decorating the clay good that can be used to include the photo of the teacher receiving it, on the gift to be given away during the felicitation.
 - Draw the figure of a suitable container to pack the gift.
- An effective planning is required to make any task a success. In producing goods, making the plan of the sketch is an essential factor.
 - Create 45° and 120° angles using only the ruler and the compass.
 - Create an ellipse of which the major axis is 8 cm and the minor axis is 5 cm using any technique of your choice.
 - Draw the evolution drawing of a triangular prism shaped tea leaf container with lids. Use the following information for your drawing.

Length - 10 cm

Width - 4 cm

3. From ancient times, housewives use different methods to decorate their houses.
- Write **two** media that can be used for artificial flower decorations.
 - Mention **four** types of ribbon that can be used in stitching creations using ribbon and draw a creation suitable for a wall decoration.
 - Describe using diagrams, the steps of the process of stitching a cloth doll suitable for a small child.
4. A warp should be elongated according to the following measurements to weave a cloth with less width for producing ladies' decorative hand bags.
- * The length of the warp is 50 metres
 - * The width of the warp is 40 centimetres
 - * The number of warp threads used per one centimetre is 40
 - * The number of warp threads is $\frac{2}{80}^s$.
- Mention **two** plain weaving methods that can be used to weave the warp.
 - Show the **two** weaving types mentioned in above (i) in a graph.
 - Calculate the weight of the amount of warp threads needed to elongate the warp.
5. In cloth production, both machines and different methods are used.
- Draw an image of a bobbin used to roll warp threads.
 - Name the tool set used to elongate the threads and write down their tasks.
 - Describe with diagrams, the method in which a pattern suitable for a hand bag made of cloth is decorated using the stencil method.
6. Ceramic art has evolved with different transformations from the past to present.
- Mention **two** techniques of creating clay goods using technological equipment.
 - Describe with steps, the method of creating a clay good using any method of your preference.
 - Explain the importance of firing a produced clay good.
7. A special importance is given for garden horticulture creations along with the decorations of a house in architecture.
- Mention **four** media that can be used for garden decorating sculptures.
 - Mention **two** methods that can be used to decorate a large clay pot during the production process for interior decoration of a house, and describe **one** of those methods.
 - Explain with steps, the method in which an animal model suitable to be kept in a garden is created using a suitable medium.



PARCEL NO



LOL.1k
BookStore

විභාග ඉලක්ක පහසුවෙන් ජයගන්න

ඕනෑම තොතක් ඉක්මනින්
නිවසටම ගෙන්වා ගන්න



කෙටි සටහන්|පසුගිය ප්‍රශ්න පත්‍ර|වැඩ පොත් සඟරා|O/L ප්‍රශ්න පත්‍ර|
A/L ප්‍රශ්න පත්‍ර|අනුමාන ප්‍රශ්න පත්‍ර|අතිරේක කියවීම් පොත්|
School Book ගුරු අතපොත්



pesuru
Prakritha Private Ltd.

Akura Pilot



පෙර පාසලේ සිට උසස් පෙළ දක්වා සියළුම ප්‍රශ්න පත්‍ර,
කෙටි සටහන්, වැඩ පොත්, අතිරේක කියවීම් පොත්, සඟරා
සිංහල සහ ඉංග්‍රීසි මාධ්‍යයෙන් හෙදරටම හෙත්වා ගැනීමට

www.LOL.lk වෙබ් අඩවිය වෙත යන්න