

Grade : 07 YEAR END TEST - 2019 34 E I

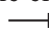
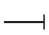

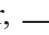
Sicence - I Time : 2 Hours

Name / Index No:.....

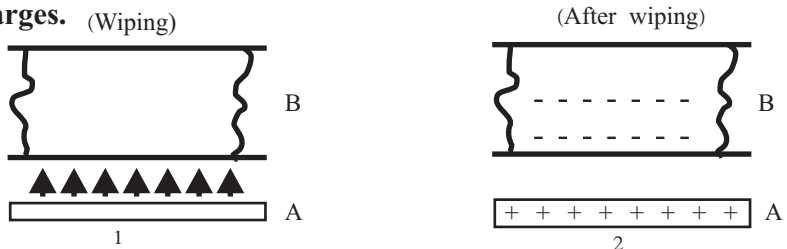
Instructions :-

- This paper consists of two papers.
- Answer all the questions in part I.
- Answer only five questions including the I and 2 questions.

* Underline the most suitable answer

01. International standard Unit of weight is,
 i. Kilogram ii. Newton iii. Gram iv. Loaf
02. Select the answer which gives the correct example for the type of roots.
 i. Prop roots - Pandanus ii. Aerial roots - "Kadol"
 iii. Climbing roots - "Betel" iv. Storage roots - "Kiri Ala"
03. Which answer includes the instrument that store electrostatic charges, its symbol and the units of electrostatic charges respectively?
 i. Capacitor, , Farade ii. Diode, , Farade
 iii. Cell, , Volt iv. Capacitor, , Amphere
04. Select the answer that contains only the invertebrates,
 i. Beatle, Leech, Gecko ii. Butterfly, Snail, Prawn
 iii. Turtle, Star Fish, Crab iv. Bivalve, Sea anemone, Frog
05. The chemical substance that is used to identify water and its colour respectively are,
 i. Copper suphate - Blue ii. Anhydrous copper sulphate - Blue
 iii. Copper sulphate - White iv. Anlydrous copper sulphate - White

* Answer the questions 6 and 7 based on the diagram given below, regarding the information of electrostatic charges.



06. Arrows in the 1st picture show,
 i. Movement of positive charges ii. Movement of electrons
 iii. Exchange of positive (+) and Negative (-) charges iv. Movement of static electricity
07. Select the correct pair of materials for A and B
 i. Glass, Woollen ii. Glass, Silk iii. Ebonite, Silk iv. Ebonite, Metal
08. Where does the ozone layer situate in the atmospheric layers?
 i. Troposphere ii. Thermosphere iii. Stratosphere iv. Mesosphere

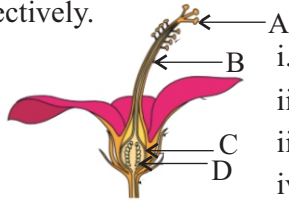
09. Some changes that can be done on the electromagnet are given below,

- A - Using a more powerful magnet
- B - Increasing the number of turns of a coil
- C - Increasing the speed of moving

Correct methods to increase the efficiency of a dynamo are,

- i. A and C
- ii. A and B
- iii. B and C
- iv. A,B and C

10. Gynoecium of a flower is given in the diagram below. Select the best answer for A,B,C and D parts respectively.



- i. Stigma, Style, Ovary, Ovules
- ii. Stigma, Style, Ovules, Ovary
- iii. Style, Stigma, Ovary, Ovules
- iv. Ovules, Ovary, Style, Stigma

11. Which characteristic is not seen in the image formed by a convex mirror?

- I. Upright
- ii. Smaller than the object
- iii. can be obtained on a screen
- iv. Lateral inversion

12. Which substance does not change the colour of a blue litmus paper?

- I. "Goraka" Juice
- ii. Sodium Hydroxide solution
- iii. Vinegar
- iv. Hydrochloric acid

13. Select the answer which includes only minerals.

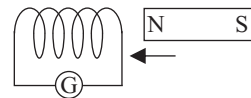
- I. Granite, Mica, Illmanite,
- ii. Mica, Illmanite, Gneis
- iii. Dolomite, Feldspar, Graphite
- iv. Dolomite, Gneis, Mica

14. The tectonic plate that Sri Lanka situates is,

- i. Phillipine tectonic plate
- ii. Pacific tectonic plate
- iii. Antactic tectonic plate
- iv. Australian - Indian tectonic plate

15. What is the observations that can be made when you insert the magnet into the coil and when you take out the magnet as shown in the picture?

- i. occur an electro - magnetic induction
- ii. an electricity flow through the coil
- iii. pointer of the Galvanometer moves
- iv. an alternating current is passing through the coil



16. Given below are the statements regarding mirrors.

- A - Convex mirror is used in the side mirrors of vehicles
- B - Convex mirrors are used to obtain light on to the stage of microscopes
- C - The image formed by concave mirror is changed according to the distance of the mirror and the object

- i. A and C
- ii. A and B
- iii. B and C
- iv. A,B and C

17. Select the correct statement given about sound

- i. Sound is propagated through vaccum also
- ii. Speed of sound is higher through solids than liquids and gases
- iii. Medium is not necessary for propagation of sound
- iv. Speed of sound in air is less than the speed of light in air

18. What is the chemical substance present in sap of sugar cane?

- i. Sodium chloride
- ii. Acetic acid
- iii. Sucrose
- iv. Fructose

19. The function of large intestine in the digestive system is,

- i. digestion of food
- ii. absorption of nutrients
- iii. defecating
- iv. absorption of water

20. An action that cannot be taken for sustainable use of energy sources is,

- i. Use of hybrid vehicles or electric vehicles
- ii. Minimize the use of plastics
- iii. Avoid travelling when there is traffic
- iv. Use private vehicles instead of public transport

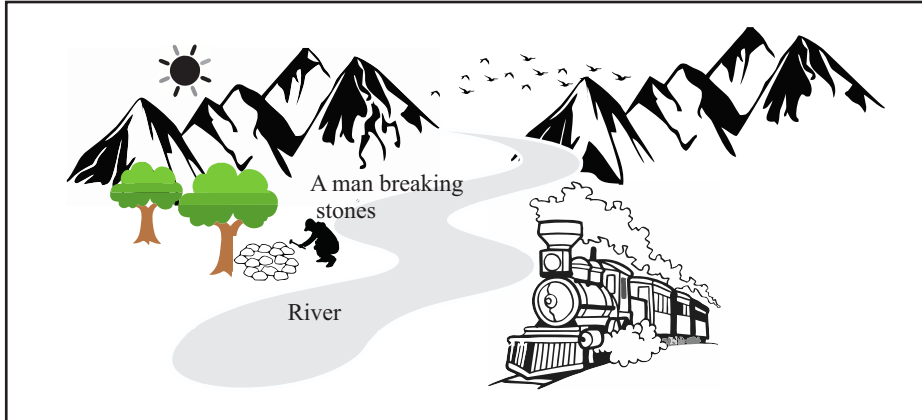
Paper II

Part A - Answer all the questions.

* Fill in the blanks using most suitable words.

* Use the given Diagrams to answer the questions.

01.



(A) I. Write two renewable sources of energy in the picture.

(02 Marks)

- 1.....
- 2.....

II. Write a fuel that can be used for trains.

..... (01 Mark)

III. Write two reasons shown in the picture that may cause air pollution in the environment.

- 1.....
- 2..... (02 Marks)

IV. A quarry worker is breaking a rock in the above picture. How does the man get energy to work?

..... (01 Mark)

V. What is the method of heat transfer from sun to earth? (01 Mark)

(B) Animals live in various environments. Modifications of them to the environment are known as adaptations.

I) What is the term used to state blend of the colours of the animals to the particular environment.

..... (01 Mark)

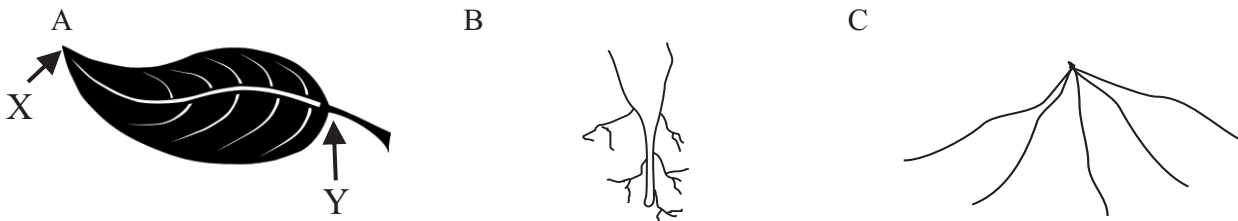
II) Give an example for the above adaptation of animals

..... (01 Mark)

III) Write an advantage that animals get by having such a adaptation.

..... (01 Mark)

02. (A) Some parts of the plants are given in the diagram below.



I) Name X and Y in the picture ,A

- i. X

II) What is the function of P in the plant?

.....

(01 Mark)

III) Study the venation type present in A. What is the type of root that can have in plants with such venation type among B and C

(01 Mark)

IV) Write two differences between the plants with a root system B and with a root system C.

Plants with root system B	Plants with root system C
i.	i.
ii.	ii.

(02 Marks)

(B) A balanced diet contains all the nutrients and fibres in correct proportion.

I) Write a consequence of not having a balanced diet.

(01 Mark)

.....

II) Write lack of which vitamin may cause following deficiency diseases.

a. Bitots (spots in eyes) -

b. Rickets -

c. Scurvy (Bleeding of gum) -

(03 Marks)

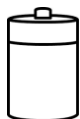
Part B

• Select three questions and answer.

03. (A) Following instruments are provided to you.



Connecting wires



a dry cell



a bulb



switch

I) Draw a diagram of a circuit that suits to light the bulb.

(02 Marks)

II) Write the transformation of energy that took place when lighting the bulb.

(01 Mark)

III) What is the International standard Unit of measuring energy?

(01 Mark)

IV) Write the form of energy used up in the following instances.

(05 Marks)

a. Stretched rubber band -

b. A propeller hold on to flowing water -

c. A music played in a radio -

d. A ballon was blown when it fixed to a mouth of an empty glass bottle which was kept in a hot water container -

e. Formation of air bubbles when a piece of magnesium is added to dilute hydrochloric acid -

(B) A set up arranged by a student to separate salt from sea water, at home is shown in the diagram.

I) What is the advantage of heating salt solution in a flat tin lid?

(01 Mark)

II) What did you observe at the end of the above activity?

(01 Mark)

III) What could be expected by opening the bottom of the box?

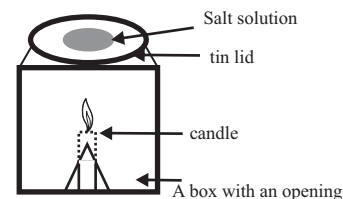
(01 Mark)

IV) Name the instruments that can be used in the laboratory instead of the box?

(01 Mark)

V) Explain the reason for the salty taste of sea water.

(02 Marks)



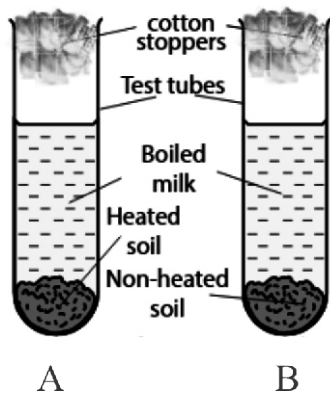
IV) How do we name this type of electric sources?

(1 Mark)

V) Is the current produced in the above set up is a direct current or an alternating current?

(1 Mark)

(B) An activity done based on the lesson soil is given in the diagram.



I) Test tubes used in the above activity are boiled in the water before using. What is the reason for it? (01 Mark)

II) What is expected by fixing cotton stoppers to test tubes?

(01 Mark)

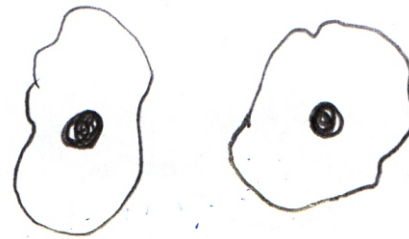
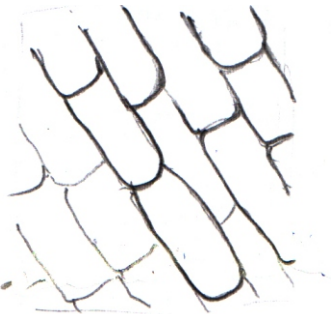
III) What could be observed after few hours?

(01 Mark)

IV) Write the reason for your answer?

(02 Mark)

(C) Diagrams of two specimens observed under compound light microscope are shown below.



I) Name A and B

(02 Marks)

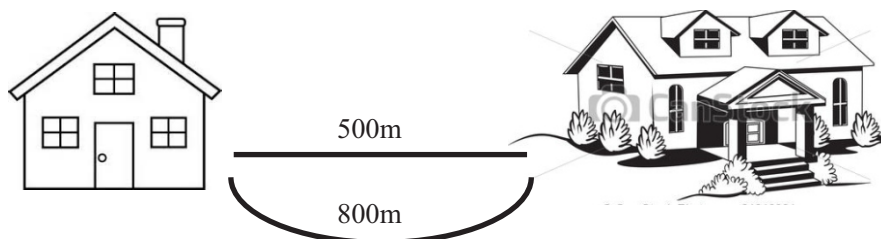
II) What is the structural and functional unit of organisms?

(02 Marks)

III) Name the tissue that transport water and minerals in the plant.

(01 Mark)

06. (A)



The path from Dumindu's home to school is shown in the picture.

I) When Dumindu goes to school and come back,

a. Find the total distance that dumindu walked.

(01 Mark)

b. What is the displacement of Dumindu?

(01 Mark)

