

Department of Education - Western Province

2010 – Year End Evaluation

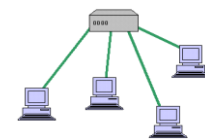
Grade 11

Information and Communication Technology – Paper 1

Name/Exam No

Time: 1

Note: * Answer all question.

1. Validity of Data depend on
 - a. Timeliness and meaningfulness.
 - b. Completeness and interconnectivity.
 - c. Dependability and ability to communicate.Which of the following is true?
1) a and b 2) a and c 3) b and c 4) All of the above.
2. A computer CPU comprises of ...
 - 1) ALU , Control Unit , Cache memory
 - 2) ALU , Control Unit, RAM
 - 3) Main Memory, cache memory, Control unit.
 - 4) Control unit, ROM, RAM.
3. What is the significant development that took place in the evolution of computer?
 - 1) The size 3) Speed of processing
 - 2) Power consumption 4) Heat generation
4. The picture shows.
 - 1) Star Topology 3) Tree Topology
 - 2) Bus Topology 4) Mesh TopologyA diagram showing a tree topology network structure. At the top is a central server or hub with four ports. Four lines connect this central node to four separate computer monitors arranged in a row below it.
5. Which of the following IP address may contain a country domain?
 - 1) mal.act.fin.edu. 3) nano.ac.in.
 - 2) nasa.gov 4) suppot.sony.com.
6. Which of the followings are features of fiber optic data transmission?
 - a. Velocity of light. b. Voltage c. Full internal reflection.1) a and b only. 2) b and c only 3) a and c only 4) c and d only.
7. Which operating system DOES NOT HAVE a Graphical user interface?
 - 1) Windows XP 3) Ubuntu
 - 2) Windows Vista 4) DOS

8. Consider the following statements about the Internet..
- Data communication in Internet is controlled by protocols.
 - Internet includes a collection of different services.
 - World Wide Web is another term that refers to Internet.
 - All websites have a unique URL.

Which of the following is TRUE about the above statements?

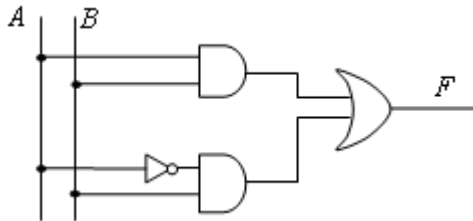
- | | |
|---------------------|--------------------|
| 1) a ,b and c only. | 3) a, c and d only |
| 2) a ,b and d only | 4) b, c and d only |
9. Which of the following is NOT a methodology of classifying Systems?
- | | |
|--------------------------------|-----------------------|
| 1) Manual and Automated | 3) Digital and Analog |
| 2) Online and Batch processing | 4) Open and close. |
10. Which **one** of the followings is essential for a network?
- | | |
|-------------------------------|---------------------------|
| 1) Modem | 3) Network interface card |
| 2) Internet service provider. | 4) All of the above. |
11. A certain number system includes seven (7) digits. The base of that number system is..
- | | |
|------|-------|
| 1) 6 | 3) 8 |
| 2) 7 | 4) 16 |
12. Consider the values of following figures in respect to their bases.
a. 10_2 . b. 10_8 c. 10_{10} d. 10_{16} .
Select the correct statement.
- All values are equal.
 - All values are equal to Decimal 10.
 - All values display their respective base value
 - All value is equal to Binary two

13. According to the following truth table, R equals to..

A	B	C	R
0	0	0	1
0	0	1	0
0	1	0	0
0	1	1	0
1	0	0	0
1	0	1	0
1	1	0	0
1	1	1	0

- | | |
|-----------------------|-----------------------|
| 1) $A.B.C$ | 3) $\overline{A+B+C}$ |
| 2) $\overline{A.B.C}$ | 4) $A+B+C$ |

14. $10110_2 + 110_2$ equals to
 1) 11100 3) 10110
 2) 10001 4) 10000
15. A student decides to make an electronic device for a water heater that is automatically disconnected when water level goes down. Which of the following logic circuit he may use.
 1) OR 3) NOT
 2) AND 4) NAND
16. Which of the following is a computer criminal?
 1) Trackers 3) Suffers
 2) Browsers 4) Hackers
17. $A \cdot (A+B)$ equals to
 1) B 2) \bar{B} 3) A+B 4) A
18. The output (F) equals to



- 1) $AB + \bar{A}B$ 3) $AB + \bar{A}\bar{B}$
 2) $AB + \bar{A}.\bar{B}$ 4) $(A + B)(\bar{A} + \bar{B})$
19. Which one of the following is an open source operating system?
 1) DOS 3) Ubuntu
 2) Windows vista 4) Macintosh
20. In a Word document, One has repeatedly miss-spelt the word “Sun” as “Son” .Which of the following is suitable to correct it.
 1) Delete and Re-type 3) Find and Replace
 2) Auto correct 4). Spelling and Grammar.
21. Which one of the following statements is WRONG about word processing software?
 a. A copied object can be pasted several times.
 b. A deleted object cannot be retrieved.
 c. A word can be moved to another location by cut and paste.
- 1) A and B correct. 2) B and C correct 3) A and C correct 4) All of above.

22. The extension of Saved Ms excel file is..
- 1) .xls
 - 2) .doc
 - 3) .slx
 - 4) .xsl

Use the following Ms. Excell sheet to answer question 23 to 25.

	A	B	C	D	E	F
1	Item	No of units	unit price	total valu	Discount	gross value
2	Monitor	3	3500			
3	Digital camera	4	16500			
4	UPS	2	4500			
5	Mother board	2	10500			
6	Flash drive	8	4900			
7						

23. The formula entered in cell D2 is..
- 1) B2*C2
 - 2) =B2,C2
 - 3) =B2:C2
 - 4) +B2*C2
24. Which formula is used to calculate 5% discount in cell E2.
- 1) =D2/100*5*B2
 - 2) =D2/100*5
 - 3) D2*5%*B2
 - 4) D2*5%*3
25. Which one of the following formulas can be used to calculate grand total of gross sale in cell F7.
- 1) =SUM(F2:F6)
 - 2) =TOTAL(F2:F6)
 - 3) =F2:F6
 - 4) COUNT(F2:F6)
26. One of the advantages of using E-presentations is that it....
- 1) Opens path to powerful presentation
 - 2) Consumes a lot of time to create.
 - 3) Require less energy to perform more tasks.
 - 4) Degrade interpersonal connection between presenter and audience.
27. Which of the followings is NOT a database management software?
- 1) Oracle
 - 2) FoxPro
 - 3) Access
 - 4) Firefox.
28. Primary requirement of connecting two tables in a Database is that..
- 1) The key fields in both tables should match.
 - 2) Both tables must contain at least one common field.
 - 3) Fields of both the tables must be common to each other.
 - 4) No of fields in each table should be similar.

29. Visual basic programming codes

- 1) Depend on hardware platform of the machine.
- 2) Converted to machine language before executing.
- 3) Execution speed is very high.
- 4) Editor of vb programs need to have a sound knowledge of computer hardware.

30. $8-2*5 \text{ MOD } 3 + 5$ equals to

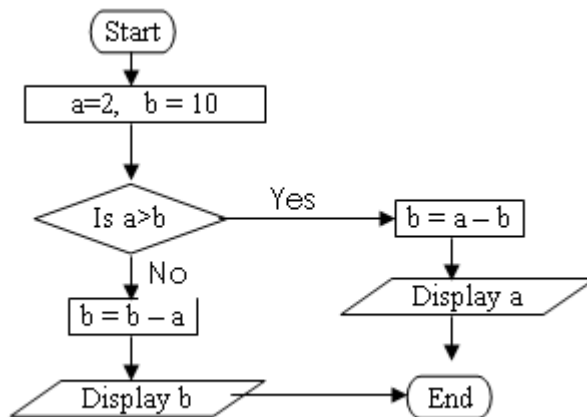
- | | |
|-------|------|
| 1) 2 | 3) 5 |
| 2) 12 | 4) 6 |

31. Find the output of the following.

```
begin
x = 0
num = 100
Until x >= num
  x = x + 10
  num = num - x
  Print num
repeat
End
```

- | | |
|----------------|---------------|
| 1) 90,80,70,60 | 3) 90,70,40,0 |
| 2) 0,10,40,70 | 4) 0,10,20,30 |

32. What is the output of following flow chart?



- | | | | |
|--------|------|-------|------|
| 1) -2. | 2) 2 | 3) -8 | 4) 8 |
|--------|------|-------|------|

33. Suppose that “m” and “n” are variables. Find the correct statement.

```
n = 8
m = 4
Do while m > 3
    n = n - 1
Loop
```

- 1) Looping is repeated 3 times.
- 2) Looping is repeated 2 times.
- 3) Looping is endless.
- 4) Looping never begins.

34. Consider the following statements about a mobile phone.

- a. It has an input and an output device.
- b. It has a main memory.
- c. It has an operating system.

- 1) a and b only.
- 2) a and c only.
- 3) b and c only
- 4) a, b and c

35. Consider the following facts on advantages of E-commerce. and select which statements are true

- 1) Less capital investment.
- 2) Less time and energy consumption on customer side.
- 3) Competitiveness brings out high quality goods to market.

- 1) A and B only
- 2) A and C only
- 3) B and C only
- 4) all of the above

36. Consider the following side effects of using a computer for a long period of time.

- a. Eye strain and head ache.
- b. Back ache and neck ache
- c. Flu and cold
- d. Repetitive strain injury.

Which one(-es) is/are correct

- 1) A and b correct.
- 2) A,c,and d correct.
- 3) A,B,and C Correct
- 4) A,B,and D Correct.

37. <TITLE> tags a written with in the scope of ...

- 1) <BODY> </BODY>
- 2) <HEAD> </HEAD>
- 3) <DIV> </DIV>
- 4) <TABLE> </TABLE>

38. Which of the following tags is used to discontinue a text line and to start a new line in HTML?
- | | |
|----------|---------|
| 1) <new> | 3)
 |
| 2) <col> | 4) |
39. Which of the following soft wares is more suitable for animations?
- | | |
|---------------------|------------------|
| 1) Macromedia flash | 3) Ms PowerPoint |
| 2) Adobe Photoshop | 4) Safari |
40. Which of the followings is NOT a social issue in using ICT?
- 1) Less consumption of stationeries.
 - 2) Widening of Digital divide.
 - 3) Aggravation of Mental strain.
 - 4) Reduce inter-personal relationship.

Department of Education - Western Province

2010 – Year End Evaluation

Grade 11

Information and Communication Technology – Paper 11

Name/Exam No

Time : 2 Hours

Note: * Answer question one and four others.

* First question carries 20 marks, others 10 marks each.

Supply short and precise answers.

1.

- I. Write two instances that ICT is utilized for Agro technological advancement.
- II. Give two side effects that affect human due to bad posture in using computer.
- III. Explain the difference between Analog and Digital signals.
- IV. Write two advantages of Computer networking.
- V. Write the result of A+B according to Boolean algebra when A=1 B=1.
- VI. What is a compiler?
- VII. Write two media in use, in multimedia communication?
- VIII. Name two benefits of an Online Learning Management System.
- IX. Ministry of Health in Western Province decided to launch a program to control Dengue.
Name a suitable software to prepare leaflet for above task
- X. Name two of advantages that the Motor Traffic Department can have in issuing licenses by using computer technology over manual system.

2. Kumudu is the most obedient student in Wp/Mt/Pahalagama Vidyalaya. She obtained 95 marks for Sinhalese and it was the highest marks. She has a long hair and she is 1.25m tall.

a. Study the above statements.

- i. Write two qualitative Data from above statement.
- ii. Write two quantitative Data from above text.

b. Teacher maintains student records of grade 8 .

- i. Name suitable software package can be used for storing above data.
- ii. What is primary key in a database table?
- iii. Name four fields that may contain in a Database of this class.
- iv. Write Data types for each of the field you wrote above.
- v. Name the data type suitable for storing a short description of students.
- vi. Explain how you would select students of certain area out of the database.

3. The Canteen owner of Wp/Mt/Olugama vidyalaya uses spread sheet to store daily transactions. During inter houses sport meet of the school, he decided to give a discount on purchase over 100 Packets of milk at a time. The amount of Discount is entered in cell C3 and the Price of a packet of milk is in Cell C2.

	A	B	C	D	E
1	Olu Canteen				
2	Price of a Milk Packet		Rs.20.00		
3	Discount		5%		
4	Purchased	Number of Milk Packets	Amount to received	Discount	Amount Paid
5	Parakum House	100	Rs.2,000.00	Rs.100.00	Rs.1,900.00
6	Mahinda House	225	Rs.4,500.00	Rs.225.00	Rs.4,275.00
7	Tissa House	500	Rs.10,000.00	Rs.500.00	Rs.9,500.00
8	Wijaya House	750	Rs.15,000.00	Rs.750.00	Rs.14,250.00
9	Gamunu House	75	Rs.1,500.00	Rs.0.00	Rs.1,500.00
10				Grand Total	Rs.31,425.00

- i. Write the formula in cell C5 to calculate total amount **without** discounts. (Your formula should be copy able to cell C6 to C9 to calculate the answer.)
 - ii. Write the formula using cell address in cell D5 to calculate discount amount. (Your formula should be copy able to cell D6 to D9 to calculate the answer.)
 - iii. Write the formula using cell address in cell E5 to calculate amount paid. (Your formula should be copy able to cell E6 to E9 to calculate the answer.)
 - iv. Write two ways to get the total in E10 cell.
4. Kamal is a businessman and a computer specialist. His business includes Buying, Selling, Storing and Transactions. He decided to install a computerized system to achieve success in his business and to control bank transactions.
- I. Write an advantage and a disadvantage of using an automated system.
 - II. Name two tasks that Kamal has to perform during system analysis.
 - III. Identify and write a subsystem and an External system connected to Kaml's business.
 - IV. Identify two factors when installing a computer automated system to above business.
- 5.
- i. Draw flowchart for a program to print square of figures 1 to 10 sequentially.
 - ii. Write pseudo codes for the above flow chart.
 - iii. Modify the above flowchart to get the square root of above sequential number.
6. Write short notes on three of the following topics.
- i. computer viruses
 - ii. Importance of computerizing state institutes.
 - iii. National Unity through ICT.
 - iv. on line shopping