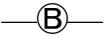
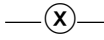
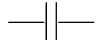



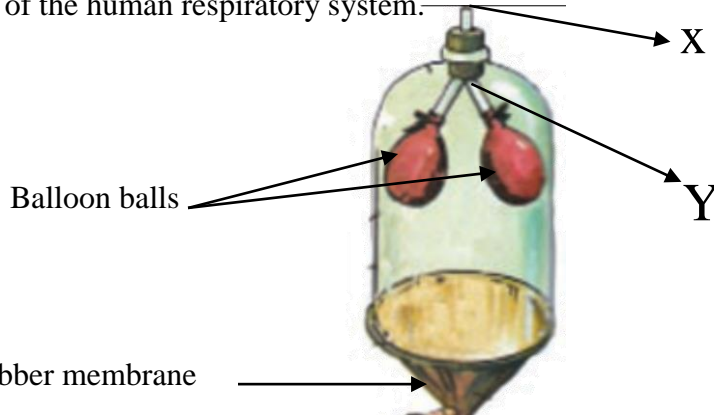


- 10). Choose the non-reptile animal.  
 1). Crocodile                      2). Salamander    3). Cobra    4). Lizard
- 11). Choose the answer that includes the least polluting energy source in use.  
 1). Nuclear energy, coal    2). Geothermal, Biomass  
 3). Wind, Solar energy    4). Petroleum, Natural gas
- 12). Choose the answer that includes only invertebrates.  
 1). Seahorse, Python, Grasshopper    2). Butterfly, Ascetic Spider, Earthworm  
 3). Tortoise, Grasshopper, Toad    4). Snail, Fish, Butterfly
- 13). Simple food + Oxygen  $\longrightarrow$  Strength + Carbon dioxide + Water vapor  
 Above is the respiratory process of a human being. What is the process that provides the necessary oxygen for that?  
 1). Combustion    2). Respiration  
 3). Inhalation    4). Breathing
- 14). Devices used in electrical circuits can also be represented by standard symbols. What is the symbol used for a light bulb in a circuit?  
 1).                       2).                       3).                       4). 
- 15). What is observed when a small amount of onion solution is placed on a tin lid and heated?  
 1). A black shadow remains on the lid of the tin.                      2). The solution remains on the lid of the tin  
 3). Nothing is left in the tin lid.    4). A white shadow remains on the lid of the tin.
- 16). To which system does the human pair of kidneys belong ?  
 1). Digestive system    2). Circulatory system  
 3). Respiratory system    4). Excretory system
- 17). An instrument that produces sound by vibrating strings  
 1) Trumpet    2). Arrogance                      3). Veena    4). Serpina
- 18). Choose the answer that includes only Unicellular organisms.  
 1). Amoeba, Sea flower    2). Amoeba, Paramecium  
 3). Paramecium, Sea flower    4). Euglena, Tilapia
- 19). Not a use case of plane mirrors,  
 1). Peridoscope                      2). Kaleidoscope                      3). Simple microscope                      4). To see the face
- 20). What is the function of the lens adjuster that is part of the compound light microscope ?  
 1). Adjusting the tube to observe the specimen.  
 2). Directing light from a source onto the diaphragm.  
 3). Controlling the amount of light that hits the illustration.  
 4). Finer adjustment of the tube to clearly see the specimen.

## Paper II

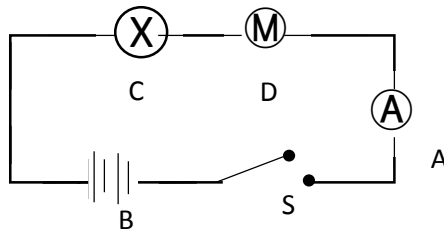
• The first question is mandatory , Answer the first question and four more questions.

01. A) Below is a diagram of a model prepared for Grade 7 students to demonstrate the structure and function of the human respiratory system.



- i). Name the parts of the human body that correspond to the named parts of the model.
- |     |                 |       |          |
|-----|-----------------|-------|----------|
| a). | Rubber membrane | ..... |          |
| b). | Balloon balls   | ..... |          |
| c). | X tube          | ..... |          |
| d). | Y tube          | ..... | (M : 04) |
- ii). What happens when the rubber membrane here is pulled down? (M : 01)
- iii). Is the opportunity represented by it breath? Breathing ? (M : 01)
- iv). Write 2 changes in air in human nasal cavity. (M : 02)

B) Below is a diagram of a circuit made by children for a group activity.



- i). Name the devices A,B,C,D here. (M : 04)
- ii). Write two changes in C and D when switch 'S' is closed. (M : 02)
- iii). Write two types of metals which can be used as + and - as ends respectively in the generation of electricity from a lime. (M : 02)

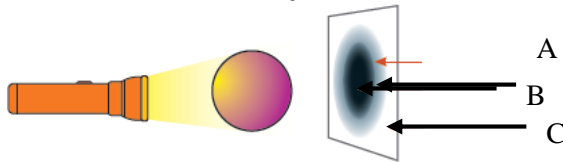
02. A) Put a ✓ mark if the following statements are true and a ✗ mark if they are false in the brackets in front of the statements.

- i). Fern is a flowering plant. ( )
- ii). Leeks and sweet potato plants have underground stems. ( )
- iii). A microfarad is used to measure the amount of charge stored in a capacitor ( )

Unit is used.

- iv). From copper and zinc plates applied in a simple cell + the tip is zinc. ( )
- v). The speed of sound in light is also faster than the speed of sound in air. ( )
- vi). Cane sugar contains glucose ( )
- vii). Blue powder dissolves very well in water. ( )
- viii). A candle contains chemical energy. ( )
- ix). Earthquakes mostly occur near tectonic plate boundaries. ( )
- x). The structural and functional unit of living organisms is tissue. ( )
- xi). Sound is produced by vibrating objects ( )

03. A)

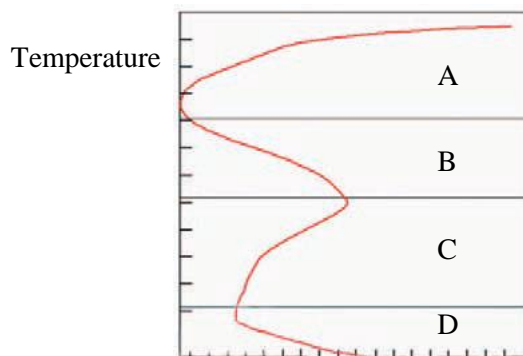


(M : 11)

- i). Here, write the letters of shadow and sub-shadow respectively. (M : 02)
- ii). What type of object should be in front of the screen to get a clear image? (M : 01)
- iii). What difference do you see on the screen when the flashlight is moved away from the object? (M : 01)

- B) i). Write 2 characteristics of images produced by convex mirrors. (M : 02)
- ii). Write an example of the most common use of convex mirrors. (M : 01)
- iii). How many reflections of the object can be seen when 2 plane mirror strips are placed at an angle of 60 degrees apart and an object is placed in the middle? (M : 01)
- iv). What is a Kaleidoscope? (M : 01)
- v). Write 2 materials needed to form a polyhedron. (M : 02)

04. A) The figure below shows how the temperature of each layer of the atmosphere changes as it goes up from the ground level.



- i). Here, name the layers indicated by letters A and B respectively. (M : 02)
- ii). Which of the above atmospheric layers is the coldest? (M : 01)
- iii). The International Space Station is housed in which of these layers? (M : 01)
- iv). What is the function of the ozone layer? (M : 01)
- v). What is elevation? (M : 01)
- vi). What is the most abundant gas in the troposphere? (M : 01)
- vii). Write 2 gaseous pollutants that cause air pollution. (M : 02)
- viii). Write 2 actions you can take to reduce air pollution. (M : 02)

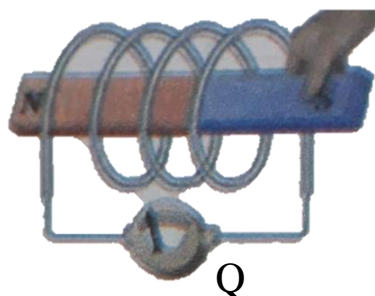
05. A) Use only the list of materials below and fill in the blanks with the appropriate words.

- i). A neutral substance used in the home. (.....)
- ii). A strong base in the laboratory. (.....)
- iii). A laboratory indicator. (.....)
- iv). Turns blue litmus red. (.....)
- v). An example of a weak base. (.....)
- vi). A fruit that can be spread by water. (.....)
- vii). Roots have nodules. (.....)
- viii). A flower belongs to Andoecium. (.....)
- ix). The example of plant that has stilt root. (.....)
- x). Provides protection during flowering. (.....)
- xi). A non-flowering plant. (.....)

(M : 11)

Lime Sour, Phenophthalin, Orchid, Fern, Onion Liquid, Keela, Sodium Hydroxide, Lime Liquid, Nidhikumba, Manipatra, Coconut, Pollen.

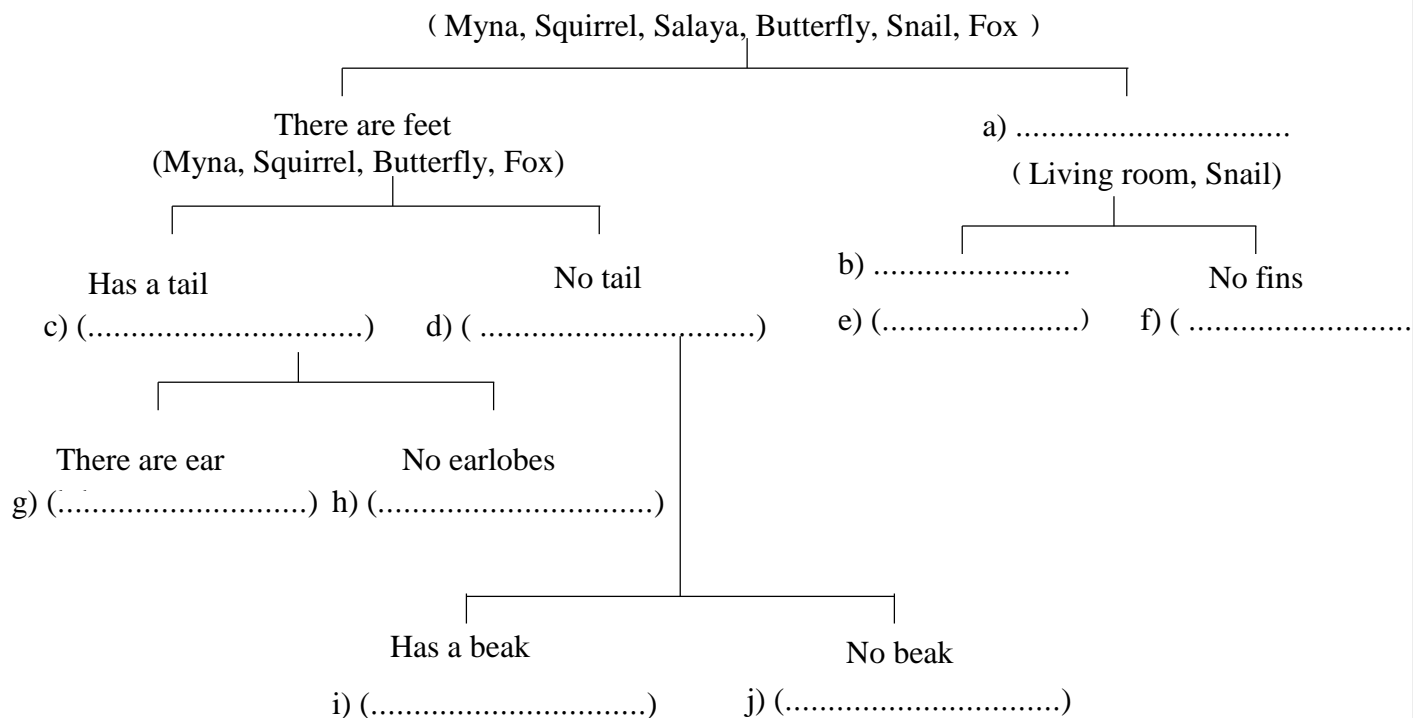
06. A) The figure shows how bar magnets are moved through a conducting coil.



- i). What device Q is used in the circuit? (M : 01)
- ii). Why is Q used in the circuit? (M : 01)
- iii). What is the observation when the magnet is moved in the coil? (M : 01)
- iv). Show in a circle the position of the pointer of the instrument Q when the magnet is at rest in the coil. (M : 01)
- v). What is the name of the above phenomenon? (M : 01)

- B) i). Present in a diagram the energy transformation that takes place in the operation of a winding clock. (M : 02)
- ii). pH paper Write the color taken in order of a) Acid b) Color taken in base (M : 01)
- iii). a). What is the charge on an ebonite rod rubbed with wool? (M : 02)
- b). What is the charge on a silk-coated glass rod? (M : 01)

07. A) Complete the following division index correctly.



(M : 05)

- i). Write an important feature of a bifurcating index. (M : 01)
- ii). Animals are classified as vertebrates and invertebrates based on which criterion? (M : 01)
- iii). Name two vertebrates used in the above division index. (M : 01)
- iv). Name two invertebrates. (M : 02)
- v). Name an animal whose body takes an abnormal shape. (M : 01)
- vi). What advantage has the animal got because of that shape? (M : 01)



LOL.lk  
BookStore

විභාග ඉලක්ක

පහසුවෙන් ජයගන්න

ඕනෑම පොතක් ඉක්මනින්  
නිවසටම ගෙන්වා ගන්න



| කෙටි සටහන් | පසුගිය ප්‍රශ්න පත්‍ර | වැඩ පොත් | සඟරා | O/L ප්‍රශ්න පත්‍ර  
| A/L ප්‍රශ්න පත්‍ර | අනුමාන ප්‍රශ්න පත්‍ර | අතිරේක කියවීම් පොත්  
| School Book | ගුරු අත්පොත්



පෙර පාසලේ සිට උසස් පෙළ දක්වා සියලුම ප්‍රශ්න පත්‍ර,  
කෙටි සටහන්, වැඩ පොත්, අතිරේක කියවීම් පොත්, සඟරා  
සිංහල සහ ඉංග්‍රීසි මාධ්‍යයෙන් ගෙදරටම ගෙන්වා ගැනීමට

www.LOL.lk වෙබ් අඩවිය වෙත යන්න