



G/ Southlands' College

ගා/සවුන්ලන්ඩ්ස් විද්‍යාලය



2nd Term Test-2022

Western Music

Grade 7

Duration : 2 hours

Name:

Index No :

Part I

In each of the questions 1-40, pick one of the alternative (1),(2),(3),(4) which you consider is correct or most appropriate.

1. Which is an unpleasant sound?

- 1) Gun Fire 2) Rustling of leaves 3) Wind blowing 4) Children singing

2. Which is the note found in the middle of the Great staff?

- 1) D 2) F 3) C 4) Middle C

3. The Music Alphabet is,

- 1) EGBDFCA 2) FACEGBD 3) ABCDEFG 4) ABCEFGB

4. Percussion instruments make a sound when it is,

- 1) Struck 2) Shaken 3) Scraped 4) All of them

5. In a Major scale semitone appear between,

- 1) 1,2 & 5,6 2) 3,4 & 7,8 3) 3,4 & 6,7 4) 1,2 & 7,8

6. The order of writing a Major scale should be,

- 1) Timesignature, Keysignature, Clef, Notes
2) Clef, Keysignature, Timesignature, Notes
3) Clef, Timesignature, Keysignature, Notes
4) Clef, Notes, Timesignature, Keysignature

7. This diagram illustrates the fingering of the note,

- 1) B 2) G 3) C 4) A



8. This rest illustrates the note value of

- 1) Minim 2) Crotchet 3) Quaver 4) Semibreve



9. What is odd one out?

1) Violoncello

2) Violin

3) Bass drum

4) Double Bass

10. Which of the following words would suite the mood or feeling in "Pink Panther"?

1) Hungry

2) Sad

3) Angry

4) Exciting

11. Piano accompaniment is used for,

1) Virindu

2) Bhajan

3) Hymns

4) Bakthi Gee

12. Which of the following religions does not use music?

1) Hindu

2) Islam

3) Christians

4) Buddhist

13. "Mee Wadayaki Jeevithe" is a famous,

1) Virindu

2) Light Song

3) Baila

4) Noorthi

14. Which of the following is a composition by Handel?

1) Harmonious Blacksmith

2) Music for the Royal fireworks

3) Water Music

4) All of them

15. Which of the following composers died in 1750?

1) D. Scarlatti

2) A. Vivaldi

3) G.F Handel

4) J.S Bach

16. Who has the full score in an orchestra?

1) String Section

2) Conductor

3) Concert Master

4) None of the above

17. Minuet in G is intimesignature.

1) 3/4

2) 4/4

3) 2/4

4) None of them


18. When the natural is raised by a semitone is,

1) Sharp

2) Flat

3) Double Sharp

4) Double Flat

19.  This timesignature is Simple.....

1) Duple

2) Triple

3) Quadruple

4) None of them

20. The English meaning of *piano* means,

1) Soft

2) Loud

3) Fast

4) Slow

Part II

Answer All Questions.

01) i) Write the following notes as Semibreve notes (5 Marks)



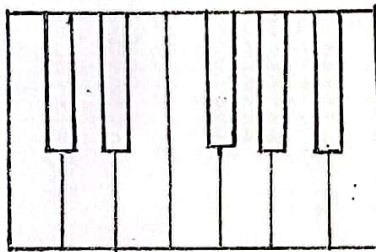
F in a space G on a line C in a space D on a line Middle C

ii) Name the following notes. (5 Marks)



02) i) Colour the following notes as follows. (5 Marks)

- C in black
- A flat in red
- F sharp in blue
- A natural in black
- B flat in red



ii) Write a rest equal to the following. (5 Marks)

$$\begin{aligned}
 & \bullet \text{ } \frac{1}{4} + \frac{1}{4} + \frac{1}{4} = \dots\dots\dots & \bullet \text{ } \frac{1}{2} + \frac{1}{2} = \dots\dots\dots \\
 & \bullet \text{ } \frac{1}{4} + \frac{1}{4} + \text{—} = \dots\dots\dots & \bullet \text{ } \text{—} + \text{—} = \dots\dots\dots \\
 & \bullet \text{ } \frac{1}{4} + \frac{1}{4} = \dots\dots\dots
 \end{aligned}$$

03) i) Add missing bar lines. (5 Marks)

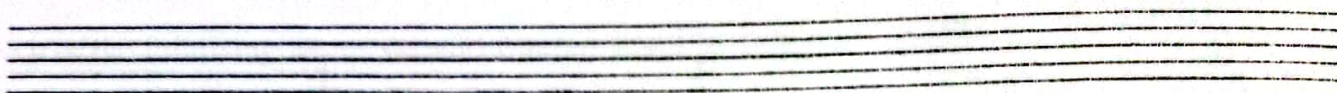


ii) Write an equal note to the following (5 Marks)

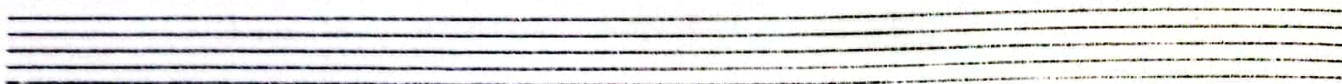


04) Write following scales.(10 Marks)

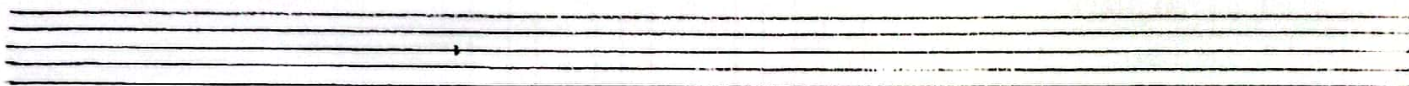
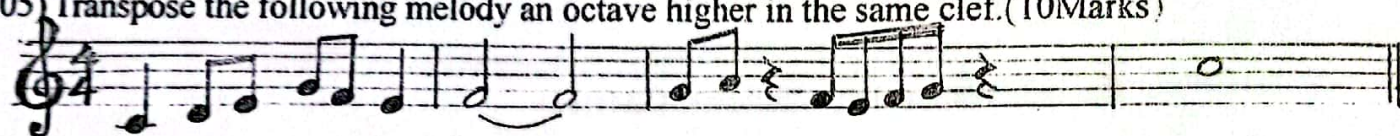
i) Write C major scale ascending ,with key signature,in minims,.in treble clef



ii) Write C major scale descending with key signature in crotchets,in treble clef



05) Transpose the following melody an octave higher in the same clef.(10Marks)



06) Complete the grid(10Marks)

Full Name of the Composer	Birth	Death	Nationality	Two Compositions
	1685			* *
		1759		* *



WWW.PastPapers.WIKI

Download past papers, notes, and more from Past Papers Wiki!



LOL.Lk
Learn Ordinary Level

විභාග ඉලක්ක පහසුවෙන් ජයගන්න පසුගිය විභාග ප්‍රශ්න පත්‍ර



- Past Papers
 - Model Papers
 - Resource Books
- for G.C.E O/L and A/L Exams



විභාග ඉලක්ක ජයගන්න
Knowledge Bank



Master Guide

WWW.LOL.LK



**CASH
ON**

DELIVERY



Whatsapp contact
+94 71 777 4440

Website
www.lol.lk



**Order via
WhatsApp**

071 777 4440