



PROVINCIAL DEPARTMENT OF EDUCATION - NORTH WESTERN PROVINCE

## Second Term Test 2018

Grade 11

## GEOGRAPHY - I

Time : 1 hour.

Name / Index No.

- There are 40 questions in this paper.
  - Study the given guide lines for each question and do it on this paper itself.
- 
- Write the suitable answer by selecting from brackets for question No. 1 to 10.
- 01 ..... is the layer that includes the earth's crust and the upper mantle.  
(Lithosphere / Biosphere / Atmosphere)
  - 02 The land forms or Physical features of the earth differ from each other in magnitude. The largest features according to magnitude are the ..... (plains and oceans / continents and oceans / mountains and plateaus)
  - 03 ..... rocks are formed by magma from the interior of the Earth and Solidifying on the crust. (Igneous / Sedimentary / Metamorphic)
  - 04 The gas that has the highest volume of the atmosphere is .....  
(Oxygen / Nitrogen / Carbondioxide)
  - 05 The shallow sea strip that stretches towards the ocean from the continental boundary is the .....  
(contiguous zone / territorial maritime boundary / continental shelf)
  - 06 ..... plateau is located in the highest point from the mean sea level.  
(Pameer / Deccan / Tibet)
  - 07 The first idea about distribution of Climates in the world was originally put forward by ..... around 384 B.C. (Austin Miller / Keppen / Aristotle)
  - 08 The peat iron ore deposits are spreaded abundantly in ..... in Sri Lanka.  
(Eppawala / Muthurajawela / Pulmudei)
  - 09 The international Paddy Research Institute is located in Manila in .....  
(Philiphine / India / Russia)
  - 10 Dairy Cattle centre in ..... has been set up to exchange lactating cows in Sri Lanka.  
(Agalawatta / Ambewela / Meevanapalana)
- Study the given statements, if these statements are correct circle 'T' if not circle 'F' for Question No 11 to 15.
- 11 Majority of the population out of the world population employees in the employments in the service sector. (T/F)
  - 12 The multinational companies has the ownership of the production of Automobile industry. (T/F)
  - 13 Marine fishing industry comprises fishing in water bodies such as rivers, streams, canals tanks and ponds in the country. (T/F)
  - 14 Depressions filled with freshwater located on the land are known as lakes. (T/F)
  - 15 The location of the ozone layer that absorb of the ultra - violet rays of the sun with in the stratosphere influences the increase of temperature in this part. (T/F)

- 16 Side 'A' shows the rivers in the world and side 'B' shows the continents that they are located,

"A"		"B"	
1. Parana	Paraguaye	A	Asia
2. Yenisi		B	Australia
3. Mare Darling		C	South America
		D	Africa
(1) A C D	(2) C D A	(3) C A B	(4) B A C (.....)

17 Side 'A' shows the coastal areas that cyclones are occurred in the world and side 'B' shows the names of them.

"A"		"B"	
1. In the pasific Ocean	close to Japan.	A	Willy - willy
2. In the North Atlantic Ocean		B	Typhoon
3. In the North Australia Ocean		C	Baguio
		D	Hurricane
(1) A C D	(2) B D A	(3) B C A	(4) C A B (.....)

18 Side 'A' shows the types of reserves and side 'B' shows the areas that they are streches in Sri Lanka,

"A"		"B"	
1. Strick natural reserves		A	Minneriya
2. Sanctuaries		B	Somawathiya
3. National parks		C	Ritigala
		D	Knuckles
(1) C A B	(2) A C B	(3) B C D	(4) A B D (.....)

19 Side 'A' shows the power stations that generate electricity in Sri Lanka. Side 'B' shows the areas that they are located,

"A"		"B"	
1. Hydro power station		A	Puttalam
2. Thermo power station		B	Gannoruwa
3. Wind power station		C	Kothmale
		D	Norochchole
(1) A C B	(2) C A D	(3) D C B	(4) C D A (.....)

20 Side 'A' shows the tea plantation areas and side 'B' shows the districts of those areas,

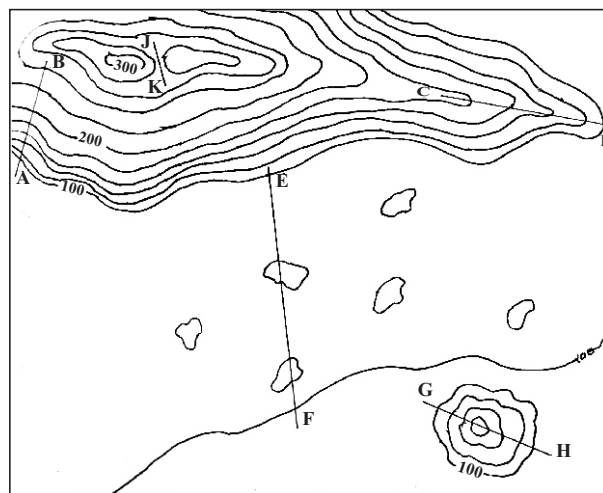
"A"		"B"	
1. Up country		A	Badulla
2. Mid country		B	Nuwara Eliya
3. Low country		C	Kurunegala
		D	Rathnapura
(1) A B C	(2) B A D	(3) C A B	(4) B A C (.....)

● **Fill in the blanks using the correct word for Question No. 21 to 25.**

- 21 ..... are the large land masses which have risen from oceans.
- 22 According to the geological datings, most of rocks in Sri Lanka belong to the ..... era.
- 23 The boundary that separates the mantle from the core of the Earth is called the ..... discontinuity.
- 24 ..... clay is used to produce high quality ceramic wares in Sri Lanka.
- 25 The main indicators used in measuring ..... indicator are, life expectancy at birth, literacy and purchasing power parity tailed withe the percapita gross national product.

● **Study the following picture and answer the questions for 26 to 30.**

- 26 The line A - B shows a ..... slope.
- 27 The topographical feature shown by C - D line is a .....
- 28 The topographical feature shown by E - F line is a .....
- 29 The topographical feature shown by G - H line is a .....
- 30 The topographical feature shown by J - K line is a .....



● **Select the most suitable answer and write the number of the answer on the given space for question No 31 to 40.**

- 31 The world population in 2017 was,  
 (1) 7.5 billions (2) 8.2 billions (3) 7.2 billions (4) 8.5 billions (.....)
- 32 In addition to the population concentrations, the secondary population concentration with a high density of population is in,  
 (1) North Western Europe  
 (2) Eastern Asia  
 (3) North Eastern Coastal Concentration of North America  
 (4) Southern and South Eastern Asia. (.....)

- 33 The layer of the atmosphere that has the least temperature is,
- (1) Troposphere (2) Stratosphere  
(3) Mesosphere (4) Thermosphere (.....)
- 34 According to the distribution of water in the globe, 79% of water on the land is as,
- (1) ground water (2) surface water  
(3) soil water (4) Ice caps and snow (.....)
- 35 A geological hazard among the natural hazards in the world is,
- (1) Bush fire (2) Tsunami (3) Flood (4) Epidemics (.....)
- 36 The basic feature of the assembling industry is,
- (1) Specialization, labour admeasurement, multinational companies  
(2) Technological development, Specialization, international relationships  
(3) Multinational companies, Technological development and international relationships  
(4) Labour admeasurement, Specialization and Technological development (.....)
- 37 The main two countries that produce the highest production of wheat in the world are,
- (1) Canada and Arjantina (2) Russia and India  
(3) United States of America and Canada (4) China and India (.....)
- 38 The three districts that abundantly spread Rubber cultivation in Sri Lanka are,
- (1) Kegalle, Rathnapura and Kalutara (2) Colombo, Rathnapura and Gampaha  
(3) Gampaha, Galle and Kalutara (4) Kegalle, Badulla and Monaragala (.....)
- 39 Traditional Cottage industries are abundantly spreaded in Sri Lanka. The area that is famous for masks is,
- (1) Galle (2) Ambalangoda (3) Pilimathalawa (4) Moratuwa (.....)
- 40 At present, the technique that is used for mapping is,
- (1) Using Photos taken from Aeroplane.  
(2) Using computers.  
(3) Using photos that are taken from sattelite.  
(4) Using geographic Information system. (.....)



PROVINCIAL DEPARTMENT OF EDUCATION - NORTH WESTERN PROVINCE

## Second Term Test 2018

Grade 11

## GEOGRAPHY - II

Time : 2 hour.

Name / Index No.

- There are two parts in this paper I and II.
- First question is compulsory. Answer A, B, C parts in the first question.
- Answer 4 questions from the part II.
- You must answer altogether 5 questions only.

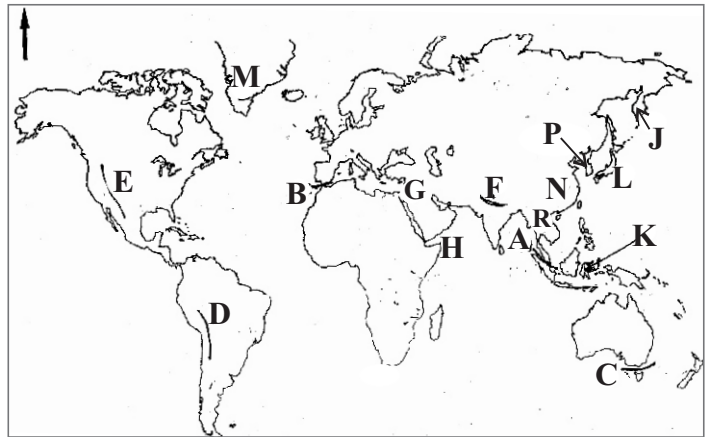
### PART - I

(01) (A) Study the given 1:50 000 topographical map and answer the questions given below.

Write the correct answer by selecting from the brackets for No. i to v.

- (i) What is the direction that the main river in the mapped area flows into? (01m.)  
(To North / To South / To North west)
- (ii) What is shown by letter A ? (Pointed height / Spot height / Trigonometrical height) (01m.)
- (iii) What is shown by letter B? (Gardens / Chena / Grasslands) (01m.)
- (iv) What is shown by letter C? (irrigation cannal / dam / tank bund) (01m.)
- (v) What is the pattern of the settlement that scattered in this mapped area? (Cluster / Linear / Scattered) (01m.)
- (vi) Write the value of the contour line that was used to build the Soraborawewa, the main tank in this mapped area. (01m.)
- (vii) What is the physical feature that is affected to decide the administrative boundary that extends through this mapped area? (01m.)
- (viii) Calculate the length of the B46 road in Kilometers. (01m.)
- (ix) Write a government institution that people in Mahiyanganaya gained service. (01m.)
- (x) Write a fact that affected to spread paddy cultivation in this area. (01m.)

- (B) Study the given map of the world and answer the following questions.



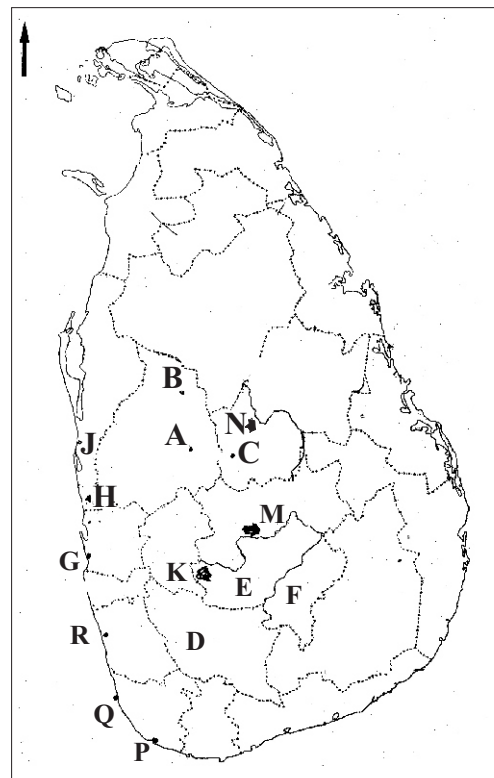
- (i) What is the letter that is shown the Gibbrolta strait which separates the Meditanenian sea and the Atlantic ocean among the letters A, B and C?
- (ii) What is the letter that is shown the Himalaya mountain range among the letters D, E and F?
- (iii) What is the letter that is shown the Sinai penisular among the penisulars shown by letters G, H and J?
- (iv) What is the letter that is shown the Pujiyama volcano among the volcanoes shown by letters K, L and M?
- (v) What is the letter that is shown China which has the highest population in the world among the letters N, P and R?

(05m.)

- (B) Study the given map of Sri Lanka and answer the following Questions.

- (i) What is the letter that is shown Kahatagaha Pathala famous for graphite production among the letters A, B and C?
- (ii) What is the letter that is shown NuwaraEliya where paddy is grown under terraced method among the letters D, E and F?
- (iii) What is the letter that is shown the coconut Research Center in Lunuwila among the letters G, H and J?
- (iv) What is the letter that is shown Moragahakanda resovior which supply water for the dry zone among the letters K, M and N?
- (v) What is the letter that is shown Beruwala which produce Boats among the harbours shown by letter P, Q and R?

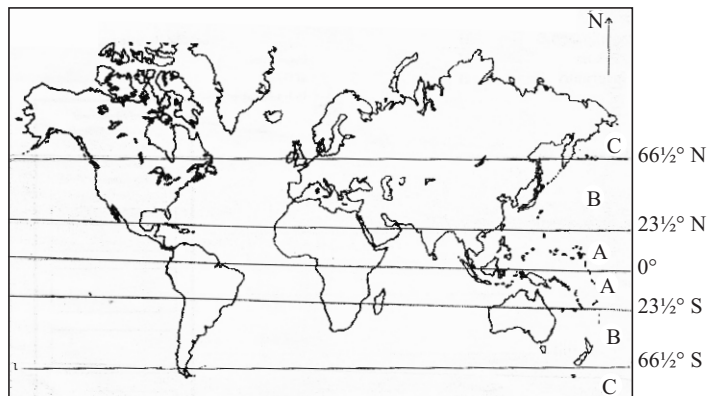
(05m.)



## PART - II

- (02) (i) Explain briefly "how soil is created." (02m.)
- (ii) a) Write a fact that affects to the creation of Soil.
- b) Write the main type of soil that abundantly can be seen in the dry zone and write how it is used. (03m.)
- (iii) a) Write 2 steps that can be taken to conserve soil. (03m.)
- b) Explain the importance of soil conservation. (02m.)

- (03) (i) Name the climatic zones shown by letter A and B in the above map (02m.)
- (ii) Write 3 special features that can be seen in the Climatic zone shown by letter A. (03m.)
- (iii) a) Write the type of forests that can be seen in the climatic zone shown by letter A. (01m.)



- b) Explain two problems that are faced by forests and wild life at present in Sri Lanka. (04m.)

- (04) (i) Explain the differences between the natura hazard and the natural disaster. (02m.)
- (ii) a) What is a landslide? (01m.)
- b) Write 2 districts that have been identified as areas prone to landslides by the Disaster Management Center in Sri Lanka. (02m.)
- (iii) a) Write 2 affects of drought. (02m.)
- b) Explain 2 steps that can be taken to minimize the impact of drought. (03m.)

### Growth of population in Sri Lanka

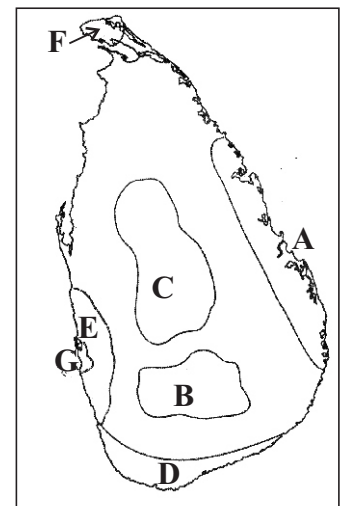
Census Year	Population (Million)	The average annual growth rate
1871	2004.4	
1881	2759.8	1.4
1891	3007.8	0.9
1901	3566.0	1.7
1911	4106.4	1.4
1921	4497.9	0.9
1931	5306.9	1.7
1946	6657.3	1.5
1953	8097.9	2.8
1963	10582.0	2.6
1971	12689.9	2.2
1981	14846.8	1.7
2001	18797.3	1.2
2012	20359.4	0.7

Source - Population and housing census report 2012 based on department of population and statistics

- (i) Write 2 temporal trends seen in population growth in Sri Lanka from 1871 to date? (02m.)
- (ii) a) According to the above table, write a reason for changing the Annual Growth rate of population in Sri Lanka after 1981. (01m.)
- b) Write 2 bad effects of that Sri Lanka is facing due to the population aging. (02m.)
- (iii) a) Write 2 main districts that have the high population in Sri Lanka. (01m.)
- b) Write 2 problems relating to the high population in above mentioned districts and Explain them briefly. (04m.)
- (06) (i) Name 2 famous countries in the continent of Europe that are famous for dairy farming in the world. (02m.)
- (ii) Write 3 factors that have contributed to the development of dairy farming in above mentioned countries. (03m.)
- (iii) a) Name the district that the Minor export crop Research Center is located in. (01m.)
- b) Write 2 each traditional and nontraditional minor export crops. (02m.)
- c) Explain the importance of minor export crops to the Economy of Sri Lanka using 2 facts. (02m.)

(07) Following map shows the 7 main tourist zones in Sri Lanka. Answer the following questions using it.

- (i) Name the 2 tourist zones shown by letter A and B. (02m.)
- (ii) a) Write 2 reasons for the tourist attraction of Sri Lanka. (01m.)
- b) Write 2 steps that can be taken to develop the tourist industry of Sri Lanka. (02m.)
- (iii) a) What are cottage industries? (01m.)
- b) Write 2 problems regarding the cottage industry in Sri Lanka and explain them. (04m.)



- (08) (i) Write one each old indicator and a modern indicator to measure development. (02m.)
- (ii) a) Name a programme that was introduced to the regional development of Sri Lanka. (01m.)
- b) Write 2 steps that are taken to develop the human resource in Sri Lanka. (02m.)
- (iii) a) Write 2 advantages through developing infrastructure facilities in Sri Lanka. (02m.)
- b) Explain briefly 3 disadvantages of using internet with the development of information and communication development at present. (03m.)



**Answer Sheet / I - Paper**

01 Lithosphere	11 F	21 Continents	31 (1)
02 Continents and Oceans	12 T	22 Pre Cambria	32 (3)
03 Igneous	13 F	23 Gutenberg	33 (3)
04 Nitrogeon	14 T	24 Keolin	34 (4)
05 Continental shelf	15 T	25 Human development	35 (2)
06 Tibet	16 (3)	26 Convex slope	36 (1)
07 Aristotle	17 (2)	27 Spur	37 (4)
08 Muthurajawela	18 (1)	28 Undulating land	38 (1)
09 Philiphine	19 (4)	29 Conical hill	39 (2)
10 Meevanapalana	20 (2)	30 Gap	40 (4)

(1 x 40 = 40 marks)

**II - Paper**

**Part - I**

- (01) (A) (i) To North  
(ii) Tragnometrical place  
(iii) Chena  
(iv) Dam  
(v) Scattered  
(vi) 100 m  
(vii) River  
(viii) 4 - 4.5 km  
(ix) Banks, Divisional secretariate office, bus stand  
(x) River valleys, Plains, Sorabora wewa (1 x 10 = 10)
- (B) (i) B (ii) F (iii) G (iv) L (v) N (05m.)  
(C) (i) A (ii) E (iii) H (iv) L (v) R (05m.)

**PART - II**

- (02) (i) Soil is formed by decomposition of organic materials for a long time and by mixing up remains of weathering rocks. (02m)  
(ii) a) Parent rock, Topographical features, Climate, time, parts of plants and animals, human activities. (01m)  
b) Red brown soil / cultivate dry crops, for chena cultivation (02m)  
(iii) a) ♦ protect the forest cover  
♦ cultivate using terraced method in hilly areas  
♦ channel systems put dunes etc., (02m)  
b) ♦ survival of plants and animals.  
♦ protect the water resource  
♦ protect the forests  
♦ for agricultural works etc., (03m)
- (03) (i) 1. Tropical zone 2. Temperate zone (02m)  
(ii) ♦ high temperature ♦ equal temperature through out the year  
♦ temperature is more than 18°C ♦ high rainfall - over 2000mm.  
♦ receive rain from conventional, monsoon and cyclones  
♦ abundance in storms (03m)

**Grade 11**

**GEOGRAPHY 2 - 3**

- (iii) a) Tropical forests / Tropical rain forest (01m)
- b) ♦ clear the forests ♦ destroy the plant and animal species
- ♦ extinct of plants and animals ♦ spread invasive plants
- explain 02 facts from above (04m)
- (04) (i) Natural Hazard - A Natural Hazard is an event in the environment that occurs naturally that could cause harm to humans, economic assets or environment.
- Natural Disaster - If the community and their physical resources and the human activities are damaged by effects of a certain hazard, such incidents are called natural disaster. (02m)
- (ii) a) The sudden movement of soil, rocks and vegetation cover on a slope in an elevated area toward the lower areas can be called a landslide. (01m)
- b) Matale, Kandy, Nuwara Eliya, Kegalle, Badulla, Rathnapura, Kalutara, Galle, Matara (02m)
- (iii) a) ♦ high scarcity of water ♦ destroy agricultural lands
- ♦ defertile the soil ♦ destroy the biodiversity
- ♦ destruction of the forest cover ♦ destroy the generating hydro electricity
- ♦ destruction of the natural beauty (02m)
- b) ♦ Conserve water sources
- ♦ Protect the vegetation cover
- ♦ Use water economizingly (03m)
- (05) (i) Population was increased slowly from 1871 to 1946.
- Population was increased fast after 1946.
- The highest annual growth rate was 2.4 during 1946 to 1953 etc., (02m)
- (ii) a) The population of people over 59 years of age in a country rise is called the population aging. (01m)
- b) ♦ The government has to spend more money on health of aging people.
- ♦ Money that can be used for development of the country has been used for aging people. etc., (02m)
- (iii) a) Colombo, Gampaha (01m)
- b) Lack of lands, Environmental, Pollution, Slums, Congetion of roads, Problems regarding urban areas, Poverty, Flood etc., (04m)
- (06) (i) Denmark, Netherland, France, Sweden, Pinland etc., (02m)
- (ii) ♦ Cool temperate climate ♦ have grasslands
- ♦ drainage ♦ trained labour
- ♦ New technology ♦ market
- explain 3 of above factors. (03m)

**Grade 11**

**GEOGRAPHY 3 - 3**

- (iii) a) Matale (01m)
- b) Traditional crops Non traditional crops
- |          |                   |
|----------|-------------------|
| Cinnamon | Cashew            |
| Coffee   | Flowers           |
| Pepper   | Maize             |
| Cardomon | Citronella        |
| Clove    | Ornamental plants |
| Nutmeg   | (02m)             |
- c) ♦ Can earn foreign exchange ♦ increase the income of locals
- ♦ create new job oppretunities ♦ regional development (02m)
- (07) (i) A Eastern coastal area B Central hills (02m)
- (ii) a) historical heritages, environmental heritages, hospitality, kindness, new creations etc., (01m)
- b) ♦ develop the hotel facilities ♦ Protect historical areas
- ♦ Supply protection to tourists
- Should explain one fact. (02m)
- (iii) a) A specific small industry based on family labour and carried out either with in a house hold of the investor or in his vicinity with a small amount of capital investor. (01m)
- b) ♦ Problems relating to take industrial raw materials ♦ lack of labour
- ♦ Affects on substitutional goods ♦ Increase the cost of Production
- ♦ Problem relating to the sale.
- explain them. (04m)
- (08) (i) Old indicators Modern indicator
- |                            |                                |
|----------------------------|--------------------------------|
| Gross National product     | Physical Quality of life Index |
| Per capita income          | Human Development Index        |
| Gross National development | Human poverty index            |
|                            | Human pressure index           |
|                            | (02m)                          |
- (ii) a) Janasaviya, Samurdhi, Divineguma, water supply projects, Gemi diriya, Gamudawa, Udagam, Modal villages (01m)
- b) Any suitable answer (01m)
- (iii) a) ♦ Open to develop new area ♦ broaden the market (02m)
- ♦ new products are received to the market quickly
- b) ♦ Children arrest to offenses ♦ Increase the criminals
- ♦ Use drugs ♦ Affects on culture
- ♦ Computer virus etc...
- Should describe 2 such disadvantages briefly (03m)