

# First Term Test - Grade 11 - 2020

**Time: 01 hour**

- (1) The Time - Signature for the given bar would be



- (2) Name the key of this music extract



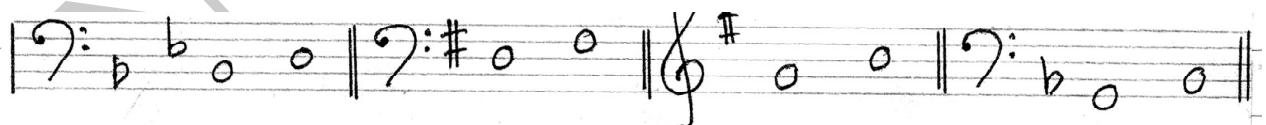
1. E<sup>b</sup> major      2. C minor      3. E major      4. B<sup>b</sup> major

- (3) Which of the following signs are correct?



1. Staccato / Legato
2. Dotted note / Staccato
3. Staccato / Dotted note
4. Staccato / Forte

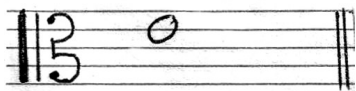
- (4) Inversion of the Major 6<sup>th</sup>?



- (5) Number of Semitones in Minor 7<sup>th</sup>?

1. 10                      2. 9                      3. 5                      4. 11

- 6) Major Scale beginning on chromatic semitone below the given note?

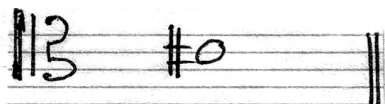


1. E major      2. E<sup>b</sup> major      3. E minor      4. F major

- (7) Which of the following Scale has it's super tonic enharmonically equivalent to the Leading note of c<sup>#</sup> harmonic minor?

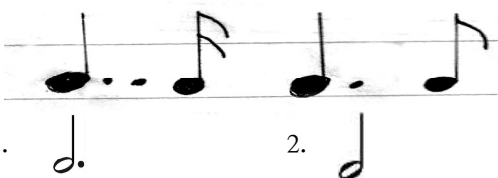
1. B<sup>b</sup> major      2. B minor      3. B major      4. C<sup>#</sup> minor

- (8) Technical name for the given note in the scale of A major?



1. Dominant      2. Tonic      3. Leading note      4. Mediant

- (9) The Total value of the given notes would be



1.      2.      3.      4.

- (10) The Bass notes of a Perfect cadence in E<sup>b</sup> major would be

1. B - E flat      2. B flat - E flat      3. B flat - E      4. E flat - B flat

- (11) The Drum kit is played by

1. Two players      2. 3 players      3. One player      4. 4 players

- (12) The correct way of writing



1.      2.      3.      4.

- (13) Appoggiatura is another name for

1. Lower mordent      2. Leaning note  
3. Turn      4. Crushed note

- (14) In oriental music "RI, GA, MA, DHA, NI" are know as

1. Achala Swara      2. Chala Swara  
3. Mathra      4. Sapthakaya

- (15) Which of the following instrument is not used in Jazz bands?

1. Trumpet      2. Piano  
3. Flute      4. Double bass

(16) Which of the following words would best suit the given rhythm



- |           |           |              |             |
|-----------|-----------|--------------|-------------|
| 1. Shadow | 2. Wonder | 3. Yesterday | 4. Far away |
|-----------|-----------|--------------|-------------|

(17) Father of Nurthi is,

- |                    |                         |
|--------------------|-------------------------|
| 1. Philippu Singho | 2. Punyasena Gunasinghe |
| 3. Charlis Silva   | 4. C. Don Bastian       |

(18) Which Bird can imitate the calls of other birds and cat's "meow".

- |                 |                  |
|-----------------|------------------|
| 1. Magpie robin | 2. Common drongo |
| 3. Grackle      | 4. Shama         |

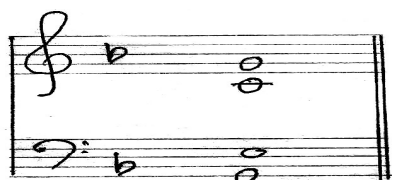
(19) Composer belongs to the late Romantic Period?

- |             |          |           |             |
|-------------|----------|-----------|-------------|
| 1. Schubert | 2. Ravel | 3. Chopin | 4. Schumann |
|-------------|----------|-----------|-------------|

(20) Least Related to the others

- |          |             |             |           |
|----------|-------------|-------------|-----------|
| 1. Opera | 2. Oratorio | 3. Overture | 4. Lieder |
|----------|-------------|-------------|-----------|

(21) What would be the chord indication for the given extract?



- |           |          |          |       |
|-----------|----------|----------|-------|
| 1. $1V^b$ | 2. $V^b$ | 3. $V^c$ | 4. IV |
|-----------|----------|----------|-------|

(22) What is the wood-wind counterpart to the Trombone in the Brass wind Section of the Orchestra.

- |          |             |            |         |
|----------|-------------|------------|---------|
| 1. Flute | 2. Clarinet | 3. Bassoon | 4. Oboe |
|----------|-------------|------------|---------|

(23) Non transposing instrument?

- |         |                |            |                  |
|---------|----------------|------------|------------------|
| 1. Tuba | 2. Double Bass | 3. Piccolo | 4. Cor - Anglais |
|---------|----------------|------------|------------------|

(24) Which of these is not used in Electronic music

- |                      |                |
|----------------------|----------------|
| 1. Digital key-board | 2. Synthesizer |
| 3. Electric Organ    | 4. Grand piano |

(25) Plucked string instruments?

- |                      |                     |
|----------------------|---------------------|
| 1. Banjo, Piano      | 2. Harp, Mandolin   |
| 3. Mandolin, Trumpet | 4. Banjo, Maddalaya |

(26) 'Crescendo' denotes an increase in?

- |           |              |          |              |
|-----------|--------------|----------|--------------|
| 1. Timber | 2. Frequency | 3. Pitch | 4. Amplitude |
|-----------|--------------|----------|--------------|

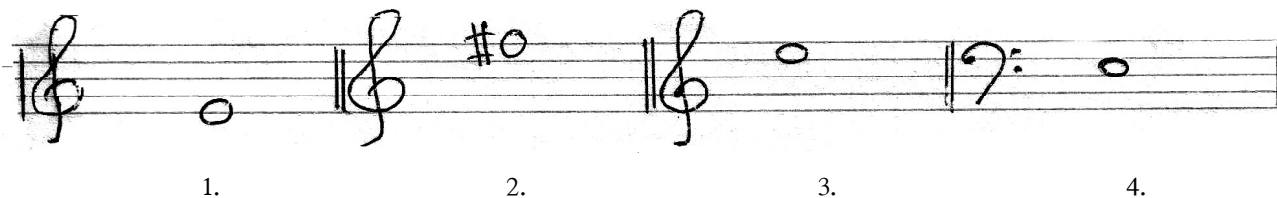
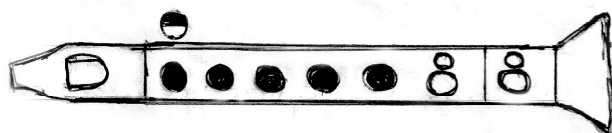
(27) Another name for Magul bera is,

- |                |                  |           |              |
|----------------|------------------|-----------|--------------|
| 1. Geta Beraya | 2. Pokuru Beraya | 3. Rabana | 4. Kala Bera |
|----------------|------------------|-----------|--------------|

(28) Drone instrument?

- |             |          |          |          |
|-------------|----------|----------|----------|
| 1. Thampura | 2. Veena | 3. Esraj | 4. Sitar |
|-------------|----------|----------|----------|

(29) Correct note for the given Descant Recorder fingering?



(30) Song "Yellow bird" fall into?

- |                  |               |
|------------------|---------------|
| 1. Calypso music | 2. Jazz music |
| 3. Pop music     | 4. Musical    |

(31) Which of the following is not a Feature of Modern period.

- |                           |                  |
|---------------------------|------------------|
| 1. Chromatic harmony      | 2. Improvisation |
| 3. More percussion sounds | 4. Alberti Bass  |

(32) In Rondo form the piece end on the

- |             |            |          |                |
|-------------|------------|----------|----------------|
| 1. Dominant | 2. Mediant | 3. Tonic | 4. Related key |
|-------------|------------|----------|----------------|

(33) In which period was the piano invented?

- |            |              |             |           |
|------------|--------------|-------------|-----------|
| 1. Baroque | 2. Classical | 3. Romantic | 4. Modern |
|------------|--------------|-------------|-----------|

(34) Which one is not based on the Environmental music?

- |                        |                     |
|------------------------|---------------------|
| 1. 1812 Overture       | 2. Four Seasons     |
| 3. Carnival of Animals | 4. Trumpet Concerto |

(35) The composer of " Leonora overture"

- |                |           |          |              |
|----------------|-----------|----------|--------------|
| 1. Tchaikovsky | 2. Bartok | 3. Haydn | 4. Beethoven |
|----------------|-----------|----------|--------------|

(36) Which of the following is different from the others?

- |                    |                |              |                |
|--------------------|----------------|--------------|----------------|
| 1. Episodical form | 2. Binary form | 3. Song form | 4. 3 part form |
|--------------------|----------------|--------------|----------------|

(37) 6<sup>th</sup> space of the Great Staff.

- |      |      |      |      |
|------|------|------|------|
| 1. C | 2. B | 3. D | 4. G |
|------|------|------|------|

(38) Which of the following song has the words of "Al-most heaven- west virginia, Blue Ridge mountains"

- |                   |                               |
|-------------------|-------------------------------|
| 1. I Have a Dream | 2. Take Me Home Country Roads |
| 3. Yesterday      | 4. Top of the world           |

(39) The two composers born in the same year

- |                       |                      |
|-----------------------|----------------------|
| 1. Mozart - Beethoven | 2. Chopin - Schubert |
| 3. Handle - Bach      | 4. Verdi - Liszt     |

(40) Which of the following is not the opposite meaning?

- |                              |                     |
|------------------------------|---------------------|
| 1. Crescendo - Decrescendo   | 2. Arco - Pizzicato |
| 3. Accelerando - Rallentando | 4. Lento - Largo    |



# Provincial Department of Education - NWP

පළමු වාර පරීක්ෂණය - 11 ශ්‍රේණිය - 2020

First Term Test - Grade 11 - 2020

Name/Index No : ..... Western Music - II

Time: 02 hours

- Answer five questions including question No. 1 and selecting two questions from each of the parts A and B on this paper itself.
- Study the musical extract given below and answer the questions.

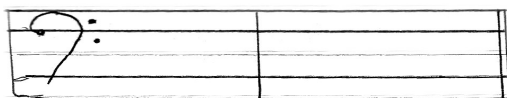
## THE ENTERTAINER

(1868 - 1917)



- What is the corresponding compound time-signature of this music extract?  
 .....
    - Melody begins with an Anacrusis (True / False)
  - Write the full name of the composer. ....
    - Name a contemporary composer. . ....

- (iii) (a) All the notes in bar 7 can be found in the key of ..... (major / minor)  
 (b) Name it's Relative (major / minor) .....  
 (iv) Write as Semibreves an Enharmonic Equivalents of the first left hand note.

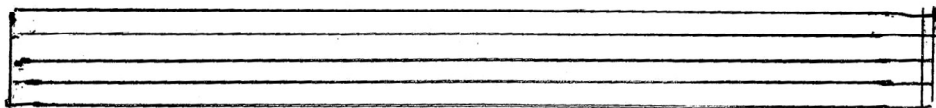


- (v) (a) Give the time name of the shortest note in the piece. ....  
 (b) Give the letter name of the lowest note in the melody. ....  
 (vi) Write one similarity and one difference between bar (6-7) and (12-13) (Right hand notes)  
 (a) Similarity - .....  
 (b) Difference - ..... (1 × 12 = 12)

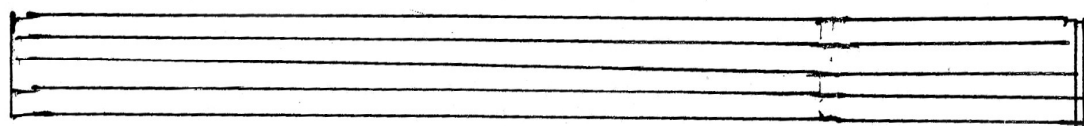
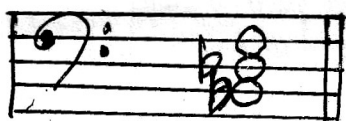
### Part A

02. Write the required scales.

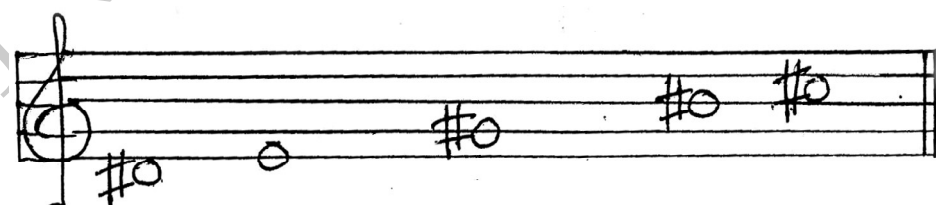
- (a) The melodic minor scales with 3 Flats begin and ends on the mediant in ascending form using G clef and using the key signature in crotchets.



- (b) A major scale in which the following triad can be found ascending and Descending, with accidentals in minims, in F clef mark semitones. Circle the Dominant and the leading



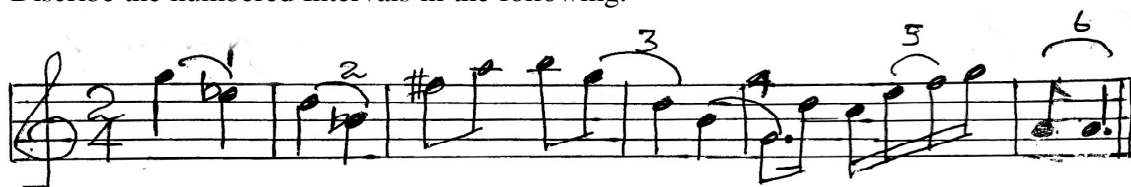
- (c) Complete the following Harmonic minor scale with the missing notes. This scale begins on the Super - tonic. Mark the Semitones with slurs.



(4 × 3 = marks)

03.

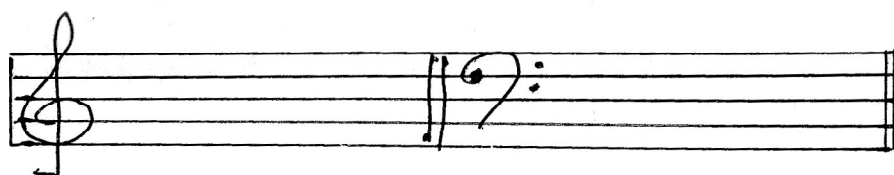
- (a) Discribe the numbered Intervals in the following.



- (1) ..... (4) .....  
 (2) ..... (5) .....  
 (3) ..... (6) .....

(1 × 6 marks)

- (b) Write the following triads, using the correct key- signature.



- (1) 2nd Inversion, Super tonic triad of G minor.  
 (2) Root position, Dominant triad of B major.

(2 × 2 marks)

- (c) Invert the following Intervals and name them.



Inversion - .....

(1/2 × 4 marks)

04.

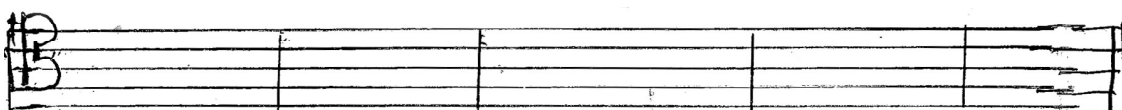
- Vary this melody in each of the ways listed below.



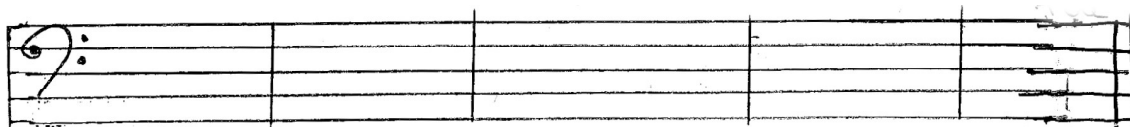
- (a) Write the above Melody - an octave lower.



- (b) Write the above Melody - into half the value.

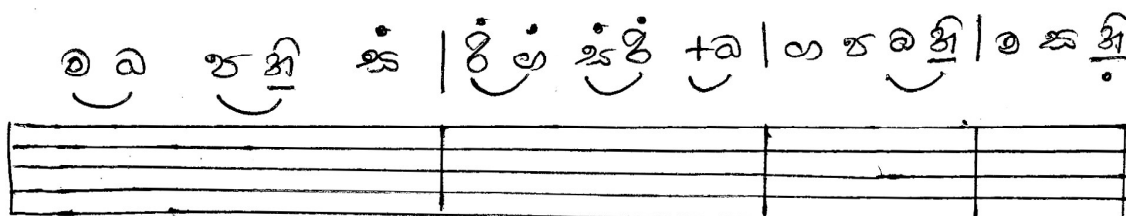


- (c) Write the above Melody octave lower and Double the value



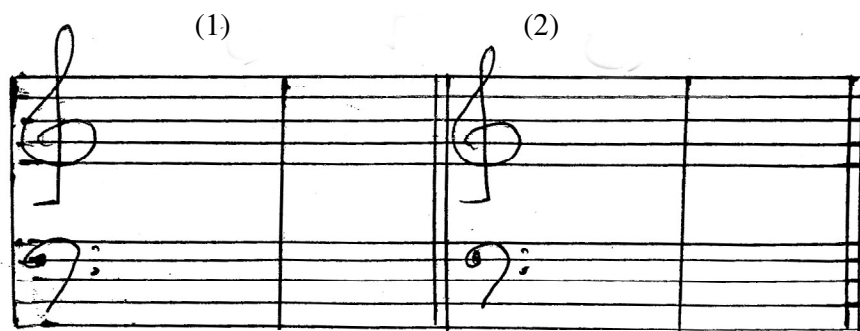
(2 × 3 = 6 marks)

- (d) Re - write the following Oriental notes into Western notation, using the treble stave.



(2 marks)

- (e) Write the following Cadences, with key signature.



- (1) Perfect cadence in G minor.  
(2) Imperfect cadence in A major.

(2 × 2 marks)

## Part B

05. (a) Answer the following questions.

- (i) What clefs may be used by the cello? .....  
(ii) Write the note that would appear on the stave to sound middle c for the clarinet in B<sup>b</sup>?



- (iii) What Interval aparts between the two strings of the viola? .....  
(iv) How far does the Double bass Transpose? .....

(1 × 4 marks)



(b) Match the musical with the song?

**A**

- (i) My fair Lady
- (ii) Sound of music
- (iii) Mary poppins
- (iv) Wizard of oz

**B**

- Some where over the rainbow
- Edelweiss
- Chim chim cherry
- Wouldn't it be lovely.

( $\frac{1}{2} \times 4$  marks)

(c) Write the English meaning for the following.

- (i) Dolce - .....
- (ii) Leggiero - .....
- (iii) Rallentando - .....
- (iv) Lento - .....
- (v) Moderato - .....
- (vi) Allegro - .....

(1 × 6 marks)

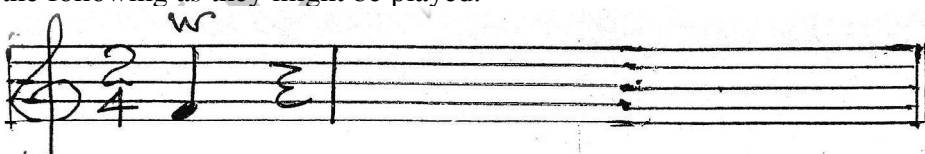
06. (a) Add the correct Rest or Rests at the places marked with an asterisk.

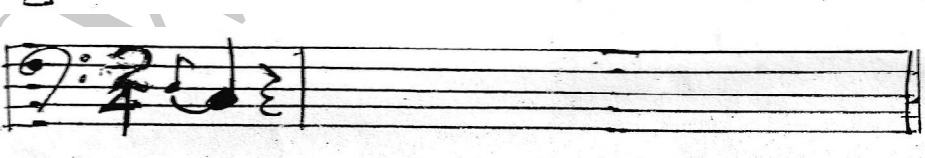
(i) 

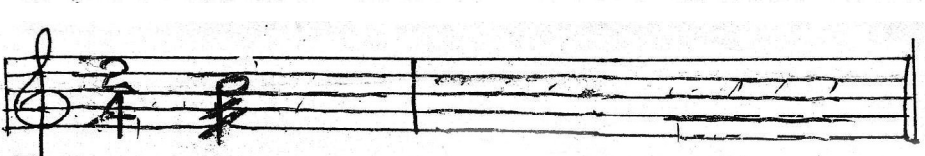
(ii) 

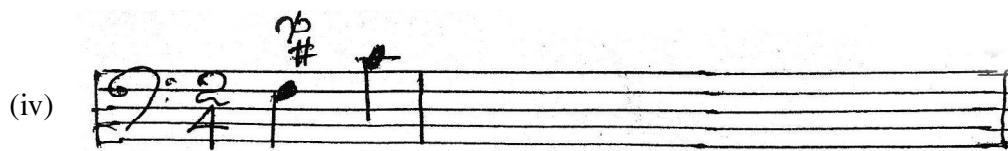
( $\frac{1}{2} \times 4$  marks)

(b) Write the following as they might be played.

(i) 

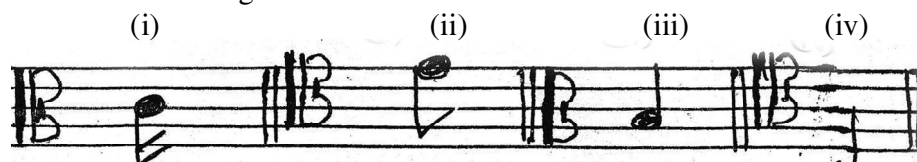
(ii) 

(iii) 



(2 × 4 marks)

(c) Name the following notes.



(1/2 × 4 marks)

07. (a) Write a brief description on any three of the following with examples to support the following words.

- |               |                    |
|---------------|--------------------|
| (i) Scales    | (ii) Cadences      |
| (iii) Triads  | (iv) String Family |
| (v) Intervals | (vi) Folk Songs    |

(2 × 3 marks)

(b) Write the name and the composer of the following works.

	COMPOSITION	COMPOSER	NATIONALITY
(i)	1812 Overture		
(ii)	Messiah		
(iii)	Rain drops prelude		
(iv)	Fidelio		
(v)	Rhapsody in Blue		
(vi)	clair de lune		

(1 × 6 marks)





# වයඹ පළාත් අධ්‍යාපන දෙපාර්තමේන්තුව Provincial Department of Education - NWP

41

E

පළමු වාර පරීක්ෂණය - 11 ශ්‍රේණිය - 2020

First Term Test - Grade 11 - 2020

Western Music - Practical

- (1) Sing a song given in the syllabus.
  - a). Pitch
  - b). Rhythm
  - c). Diction
  - d). Expression
  - e). Presentation

(15 marks)
  
- (2) Prepared piece - recorder.
  - a). Correct notes
  - b). Fluency
  - c). Expression and dynamics
  - d). Presentation
  - e). Time

(15 marks)
  
- (3) Choice piece - any instrument (without recorder)
  - a). Correct notes
  - b). Fluency
  - c). Expression and dynamics
  - d). Presentation
  - e). Time

(15 marks)
  
- (4) Sight reading on teacher's choice.
 

(10 marks)
  
- (5) Sight singing on teacher's choice.
 

(10 marks)
  
- (6) Scales based on the syllabus.
 

2 scales on piano -

2 scales on recorder -

$2 \times 2^2 /_1 = (05 \text{ marks})$

$2 \times 2^2 /_1 = (05 \text{ marks})$
  
- (7) Read and clap 2 phrases.
 

$2 \times 2^2 /_1 = (05 \text{ marks})$
  
- (8) Listen and clap 2 phrases.
 

$2 \times 2^2 /_1 = (05 \text{ marks})$

- (9) Listening (played by the teacher). Listen to the teacher and post number in each cage to the correct order.

1		Perfect cadence
2		Baila
3		Imperfect cadence
4		Pentatonic scale
5		Major 2 <sup>nd</sup>
6		Major triad
7		Major scale
8		Vannam
9		Minor triad
10		Folk song
11		Harmonic minor
12		Mordent
13		Perfect 5 <sup>th</sup>
14		Melodic minor
15		Turn

(15 marks)





# Provincial Department of Education - NWP

41	E	I-II
----	---	------

පළමු වාර පරීක්ෂණය - 11 ශ්‍රේණිය - 2020

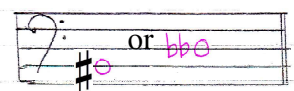

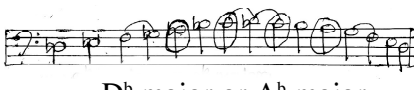
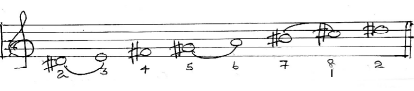

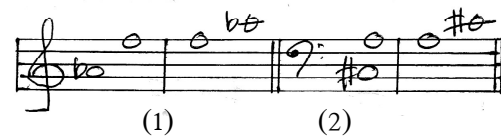


First Term Test - Grade 11 - 2020

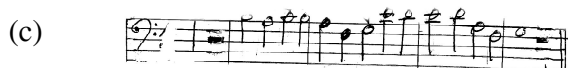
## Western Music - Answers

### Part - I

01. 3	11. 3	21. 3	31. 4
02. 2	12. 1	22. 2	32. 3
03. 3	13. 2	23. 1	33. 2
04. 4	14. 2	24. 4	34. 4
05. 1	15. 3	25. 2	35. 4
06. 2	16. 3	26. 4	36. 2
07. 1	17. 4	27. 1	37. 3
08. 4	18. 2	28. 1	38. 2
09. 3	19. 2	29. 3	39. 3
10. 2	20. 4	30. 1	40. 4

### Part - II

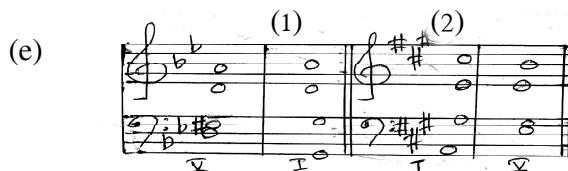
01. (i) (a)  $\frac{6}{8}$   
 (b) True  
 (ii) (a) Scott Joplin  
 (b) Louis Armstrong  
 Duke Ellington  
 (iii) (a) G major  
 (b) E minor  
 (iv)   
 (v) (a) Semi- quaver  
 (b) C  
 (vi) (a) Rhythm  
 (b) dynamics, key, pitch ( $1 \times 12 = 12$ )
02. (a)   
 (b)   
 D<sup>b</sup> major or A<sup>b</sup> major  
 (c)   
 (4 × 3 marks)
03. (a) (1) major 3<sup>rd</sup>  
 (2) major 3<sup>rd</sup>  
 (3) perfect 4<sup>th</sup>  
 (4) major 3<sup>rd</sup>  
 (5) minor 2<sup>nd</sup>  
 (6) unison (6 marks)
- (b)   
 (1) (2)  
 (2 × 2 marks)
- (c)   
 (1) (2)  
 Inversion minor 3<sup>rd</sup> major 3<sup>rd</sup>  
 ( $\frac{1}{2} \times 4$  marks)
04. (a)   
 (b) 



(2 × 3 = 6 marks)

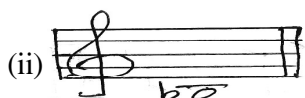


(2 marks)



(2 × 2 marks)

05. (a) (i) Bass / Tenor clefs



(iii) Perfect 5<sup>th</sup>

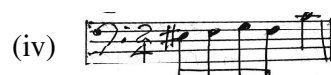
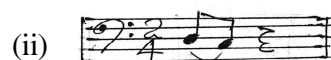
(iv) Octave lower (1 × 4 marks)

- (b) (i) My fair lady - wouldn't it be lovely  
(ii) Sound of music - Edelweiss.  
(iii) Marry poppins - chim chim cherry  
(iv) Wizard of oz- some where over the rain bow.

(1/2 × 4 marks)

- (c) (i) Sweetly  
(ii) Lightly  
(iii) Becoming gradually slower  
(iv) Slow  
(v) At a moderate pace  
(vi) Lively (1 × 6 marks)

06. (a) (i)   
(ii) (1 × 4 marks)



(2 × 4 marks)

(c) (i) M. C

(ii) E

(iii) B

(iii) B (1/2 × 4 marks)

07. (a) .....

(b) (i) 1812 Overture - Tchaikovsky / Russian

(ii) Messiah - Handel / German.

(iii) Rain drops prelude - Chopin / Polish

(iv) Fidelio - Beethoven / German

(v) Rhapsody in Blue -Gershwin / American

(vi) Clair de lune- Debussy / French

(1 × 6 marks)