

[All Rights Reserved]

[New Syllabus]

NEW 52 E I, II

Department of Examinations, Sri Lanka

අධ්‍යයන පොදු සහතික පත්‍ර (සාමාන්‍ය පෙළ) විභාගය, 2017 දෙසැම්බර්
கல்விப் பொதுத் தராதரப் பத்திர (சாதாரண தர)ப் பரீட்சை, 2017 டிசம்பர்
General Certificate of Education (Ord. Level) Examination, December 2017

නාට්‍ය හා රංග කලාව **I, II**
நாடகமும் அரங்கியலும் **I, II**
Drama and Theatre I, II

පැය තුනයි
மூன்று மணித்தியாலம்
Three hours

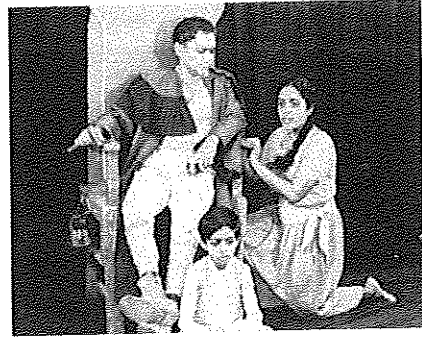
Drama and Theatre I**Note :**

- Answer *all* questions. Total marks for this paper is 40.
- In each of the questions 1 to 40, pick one of the alternatives (1), (2), (3), (4) which you is *correct or most appropriate*.
- Mark a cross (X) on the number corresponding to your choice in the answer sheet provided.
- Further instructions are given on the back of the answer sheet. Follow them carefully.

- Thovil is
 - a fertility rite.
 - a ritualistic ceremony.
 - masked mimic entertainment.
 - an exorcist ceremony.
- The making of ceremonial masks is associated with
 - Ambalangoda.
 - Panadura.
 - Galle.
 - Matara.
- Guruhamy hails from
 - Kerala.
 - Uttar Pradesh.
 - Tamil Nadu.
 - Bengal.
- Western drama originated in
 - England.
 - the United States.
 - Greece.
 - France.
- Words spoken alone by a character reflecting his/her thoughts are characterized as
 - asides.
 - diatribes.
 - self-communing.
 - soliloquies.
- Shakespeare's plays, in his time, were staged in
 - Cambridge.
 - Oxford.
 - Starford-upon-Avon.
 - London.
- The renaissance in modern sinhala drama began in the
 - 1940s.
 - 1950s.
 - 1960s.
 - 1970s.
- The renaissance in modern Tamil drama began in the
 - 1940s.
 - 1950s.
 - 1960s.
 - 1970s.
- The renaissance in Sinhala drama was ushered in by
 - Gunadasa Amarasekara.
 - Siri Gunasinghe.
 - Ediriweera Sarathchandra.
 - Dayananda Gunawardana.
- The renaissance in Tamil drama was ushered in by
 - S. Vithiananthan.
 - S. Maunaguru.
 - K. Sivthamby.
 - K. Kailasapathy.

11. The scene is from the original production of a Brecht play in Sinhala translation which celebrated 50 years of continuous performance this year. Identify the title of the original play.

- (1) **The Good Woman of Setzuan.**
- (2) **Mother Courage.**
- (3) **The Caucasian Chalk Circle.**
- (4) **The Threepenny Opera.**



12. The actor playing Azdak in the picture is also the translator of the play and director. Identify him.

- (1) Sunanda Mahendra.
- (2) R. R. Samarakoon.
- (3) Henry Jayasena.
- (4) Dayananda Gunawardana.

13. The actress playing Grusha in the picture is

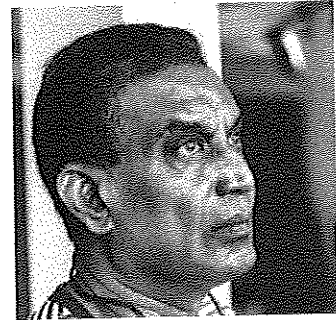
- (1) Iranganie Serasinghe.
- (2) Trilicia Gunawardana.
- (3) Rukmani Devi.
- (4) Manel Jayasena.

14. Brecht borrowed the plot for his play from

- (1) early Japanese literature.
- (2) early Chinese literature.
- (3) classical Greek literature.
- (4) classical Latin literature.

15. The picture is of a well-known director in the English-language theatre. Identify him.

- (1) Indu Dharmasena.
- (2) Feroze Kamurdeen.
- (3) Jerome L. de Silva.
- (4) Haig Karunaratne.



16. This director is the founder of a theatre group which celebrated its 25th anniversary this year. Identify the group.

- (1) The Workshop Players.
- (2) Theatre Junction.
- (3) Mind Adventures.
- (4) The Combined Theatre Company.

17. **Love, Lies and Diamonds** is the 65th production (August 2017) of a leading satirical-comic playwright, director and actor in the English-language theatre. Identify him.

- (1) Jith Peiris.
- (2) Feroze Kamardeen.
- (3) Seneka Abeyratne.
- (4) Indu Dharmasena.

18. The quintessential British farce, **It Runs in the Family** was written by

- (1) Bernard Shaw.
- (2) Ray Cooney.
- (3) Noel Coward.
- (4) R.B. Sheriden.

19. The **Tomiya** series of satirical-comic plays was the brainchild of

- (1) Indu Dharmasena.
- (2) Tracy Holsinger.
- (3) Vinodh Senadeera.
- (4) H.C.N. de Lanerolle.

20. The hilarious **Chaos at the Vicarage** was restaged in Colombo in June-July 2017 and directed by

- (1) Neidra Williams.
- (2) Jehan Bastians.
- (3) Jith Peiris.
- (4) Nafeesa Amirudeen.

21. **Chaos at the Vicarage** is a renaming of Philip king's play

- (1) **See How They Run.**
- (2) **Chicken Soup and Barley.**
- (3) **Charley's Aunt.**
- (4) **And so to Bed.**

22. The "Where is Freddy?" comic series is the brainchild of


- (1) Feroze Kamardeen.
- (2) Michelle Perera.
- (3) Karen Balthazaar.
- (4) Tracy Holsinger.

23. In July 2017, The Combined Theatre Company staged Shakespeare's popular comedy

- (1) **As You Lik It.**
- (2) **Twelfth Night.**
- (3) **Taming of the Shrew.**
- (4) **Midsummer Night's Dream.**

24. The 2017 remake of the 2012 production of **Rag** is a musical that is
 (1) British. (2) Sri Lankan. (3) American. (4) Australian.
25. The producer of **Rag** is
 (1) Ruwanthie de Chickera. (2) Jehan Aloysius.
 (3) Ruana Rajapakse. (4) Manuka Wijesinghe.
26. **Rag** addresses an issue which is
 (1) topical. (2) elitist. (3) social. (4) narrow.
27. The number of plays written by Shakespeare is
 (1) over 15. (2) over 20. (3) over 25. (4) over 30.
28. **Waiting for Godot** was written by
 (1) Bertolt Brecht. (2) Eugene Ionesco. (3) Samuel Beckett. (4) Henrik Ibsen.
29. **Waiting for Godot** was written in English and in
 (1) German. (2) French. (3) Norwegian. (4) Russian.
30. **Waiting for Godot** is an example of the
 (1) Theatre of the Absurd. (2) Realistic Theatre.
 (3) Theatre of the Oppressed. (4) Theatre of Cruelty.
31. **The Cherry Orchard** was written by
 (1) Jean-Paul Sartre. (2) August Strindberg. (3) Anton Chekov. (4) Harold Pinter.
32. The founder of the Punchi Theatre in Borella is
 (1) Lalitha Sarathchandra. (2) Namel Weeramuni.
 (3) R.R. Samarakoon. (4) Gunadasa Amarasekara.
33. By basing almost all his plays on legends, Ediriweera Sarathchandra expressed themes which are
 (1) obsolete. (2) irrelevant.
 (3) marginal. (4) permanent.
34. Ediriweera Sarathchandra's play **Elowa Gihin Melowa Awa** is meant for
 (1) children. (2) adults. (3) adults only. (4) all ages.
35. Ediriweera Sarathchandra's play **Ekata Matama Hina Hina** is meant for
 (1) children. (2) adults. (3) adults only. (4) all ages.
36. The award-winning play, **Trojan Kanthawo**, celebrating its 17th anniversary in 2017, was produced by
 (1) Dharmasiri Bandaranayake. (2) Dhamma Jagoda.
 (3) Sunanda Mahendra. (4) Ranjith Dharmakeerthi.
37. **Trojan Kanthawo** is
 (1) a domestic tragedy. (2) a romantic tragedy.
 (3) an anti-war tragedy. (4) a personal tragedy.
38. **Trojan Kanthawo** is a translation of a play by
 (1) Euripedes. (2) Sophocles. (3) Aristophanes. (4) Terence.
39. **Adara Wasthuwa** was written and directed by
 (1) Wijaya Nandasiri. (2) Rajitha Dissanayake.
 (3) Udayasiri Wickramaratne. (4) Ravindra Ariyaratne.
40. A good drama critic should be
 (1) merciless. (2) constructive. (3) objective. (4) kind

* *

	52 E I, II		
	Department of Examinations, Sri Lanka		

අධ්‍යයන පොදු සහතික පත්‍ර (සාමාන්‍ය පෙළ) විභාගය, 2017 දෙසැම්බර්
கல்விப் பொதுத் தராதரப் பத்திர (சாதாரண தர)ப் பரீட்சை, 2017 டிசம்பர்
General Certificate of Education (Ord. Level) Examination, December 2017

නාට්‍ය හා රංග කලාව	I, II
நாடகமும் அரங்கியலும்	I, II
Drama and Theatre	I, II

Drama and Theatre II

* Answer five (05) questions only, including question one and four other questions.

1. Read the following speech and answer the questions below it.

"Of all the fools ever let loose on a field of battle that man must be the very maddest."

- (i) Identify the play from which this speech is taken. (01 mark)
 - (ii) Identify the speaker. (01 mark)
 - (iii) Identify the character whom the speaker addresses. (01 mark)
 - (iv) Identify the character who is referred to as "he". (01 mark)
 - (v) In what country are these characters located? (01 mark)
 - (vi) Why does the speaker categorize "he" as "mad"? (03 mark)
 - (vii) How would you describe the speaker's own attitude to "he"? (02 mark)
 - (viii) How would you describe the speaker's attitude to wars? (02 mark)
2. (i) Describe the character of Raina in **Arms and the Man**. (06 marks)
 - (ii) Describe the character of Petkoff in **Arms and the Man**. (06 marks)
 3. (i) What are the qualities you expect of a hero in a play? (06 marks)
 - (ii) What are the qualities you expect of a heroine in a play? (06 marks)
 3. (i) What are the features you expect in a comedy? (06 marks)
 - (ii) Explain how you would respond as the comedy unfolds. (06 marks)
 4. (i) What are the features you expect in a tragedy? (06 marks)
 - (ii) Explain how you would respond as the tragedy unfolds. (06 marks)
 5. (i) Explain the uses of make-up in a stage performance. (06 marks)
 - (ii) Explain the uses of costumes in a stage performance. (06 marks)
 6. (i) What is your response to stylized plays? (06 marks)
 - (ii) Do you think stylized drama would survive in the future as society changes? (06 marks)
 7. (i) What is your response to straightforward realistic drama? (06 marks)
 - (ii) What is your response to departures from realism? (06 marks)



PAST PAPERS WIKI

ප්‍රශ්නපත්‍ර පොත්
ගෙදරටම ගෙන්වා ගන්න
ඔන්ලයින් ඕඩර් කරන්න

www.store.pastpapers.wiki

වෙත යන්න



ONLINE BOOK STORE

An evening of fun for young readers

